

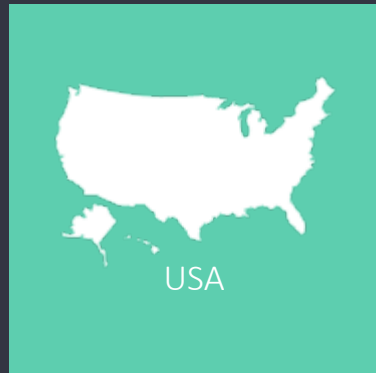
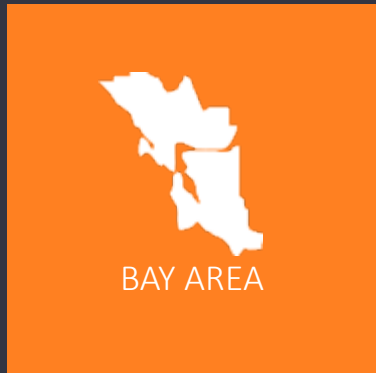
RCPA Overview

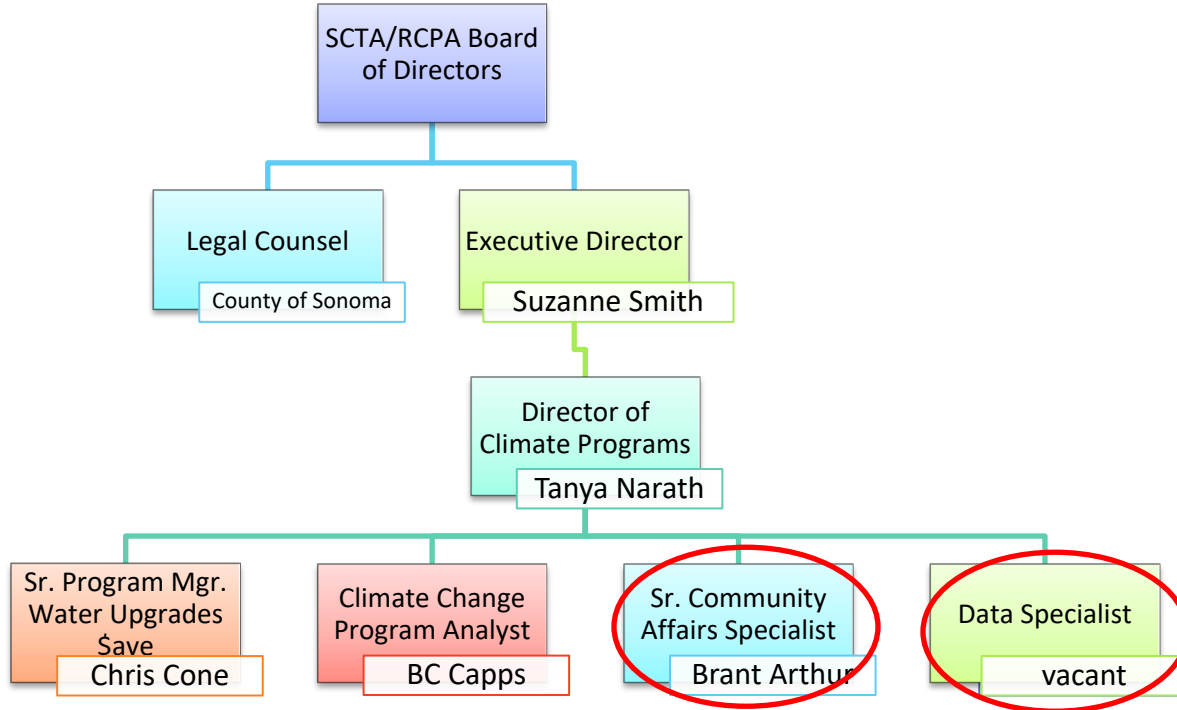
Sebastopol Climate Action Committee
March 10, 2021



- 2001: Cities for Climate Protection campaign commitment
- 2005: Countywide GHG emissions reduction target of 25% below 1990 levels by 2015 adopted
- 2008: Community Climate Action Plan developed by Climate Protection Campaign (The Climate Center)
- ***2009: RCPA established as the nation's first local government agency created specifically to address climate change***
- 2012: CAP and new GHG emissions target of 25% below 1990 levels by 2020 adopted by City of Santa Rosa
- 2014:
 - Sonoma County recognized as a Climate Action Champion by the White House
 - Climate Ready Sonoma County: Climate Hazards and Vulnerabilities published by RCPA in collaboration with North Bay Climate Adaptation Initiative

- 2016: Climate Action 2020 and Beyond published by RCPA
- 2017: Shift Sonoma County Low Carbon Transportation Action Plan published by SCTA/RCPA
- 2019: Climate Emergency Resolution adopted by RCPA Board and several local jurisdictions
- 2020:
 - Additional Climate Emergency Resolutions adopted by local jurisdictions
 - Framework and development of Sonoma Climate Mobilization Strategy approved by RCPA Board
- 2021:
 - BayREN Water Upgrades \$ave program approved by City of Sebastopol
 - Sonoma Climate Mobilization Strategy adopted by RCPA Board
 - Climate Emergency Resolution adopted by City of Rohnert Park





Mission

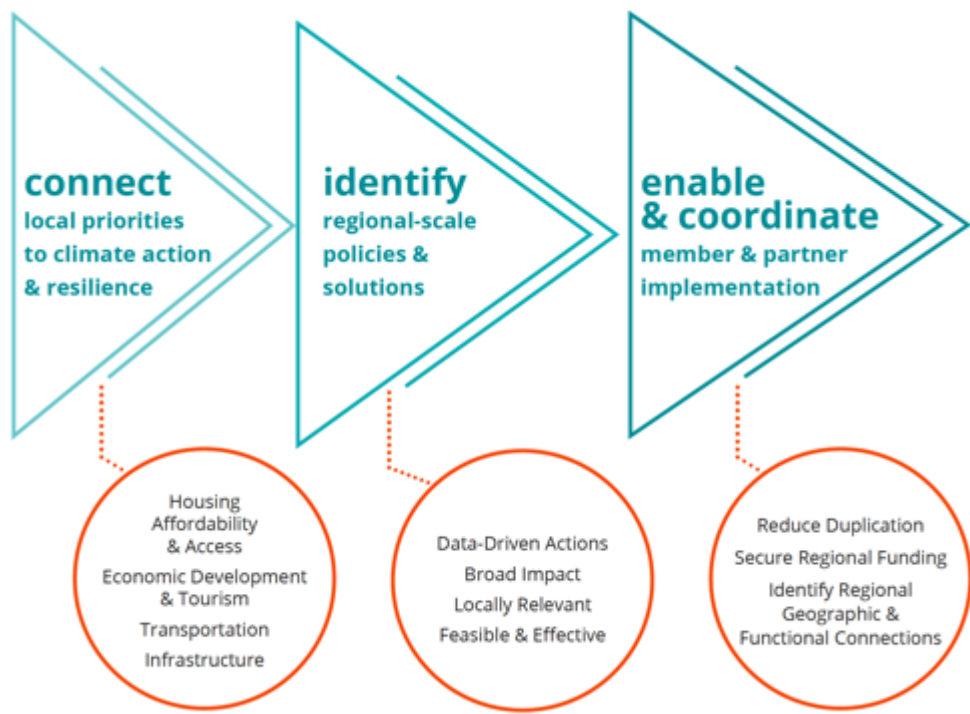
RCPA leads a local government coalition to mobilize regional climate action in Sonoma County.

Vision

Sonoma County is united in taking bold action to fight the climate crisis.

“An alliance for combined action”

“A group formed of different organizations or people who agree to act together to achieve something”





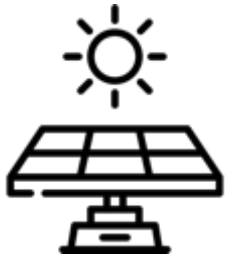
Decarbonization: Focus on Buildings and Transportation

- ✓ Housing and commercial buildings
- ✓ Advancing clean transportation options



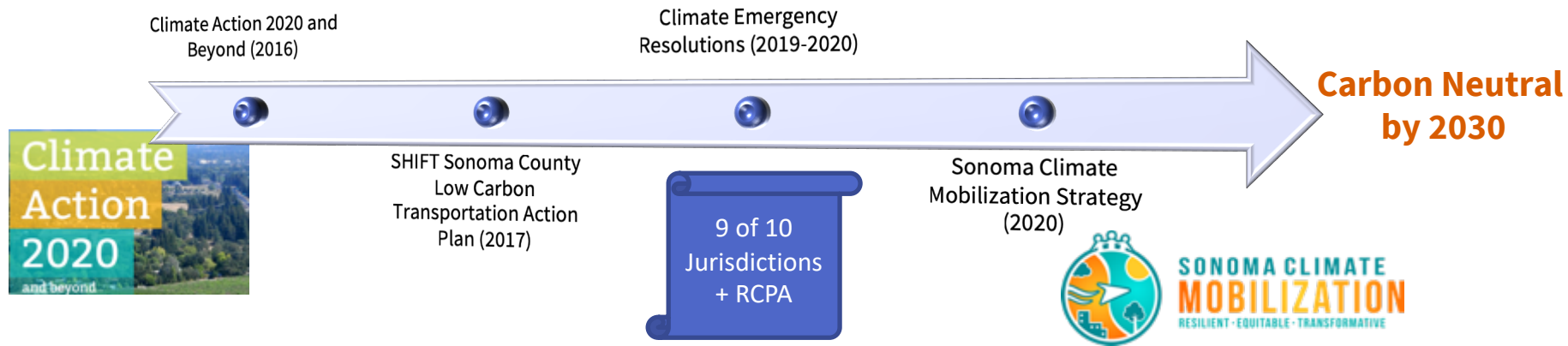
Carbon Sequestration: Focus on Ecosystem Services and Smart Land Use

- ✓ Connect partners to identify sequestration opportunities

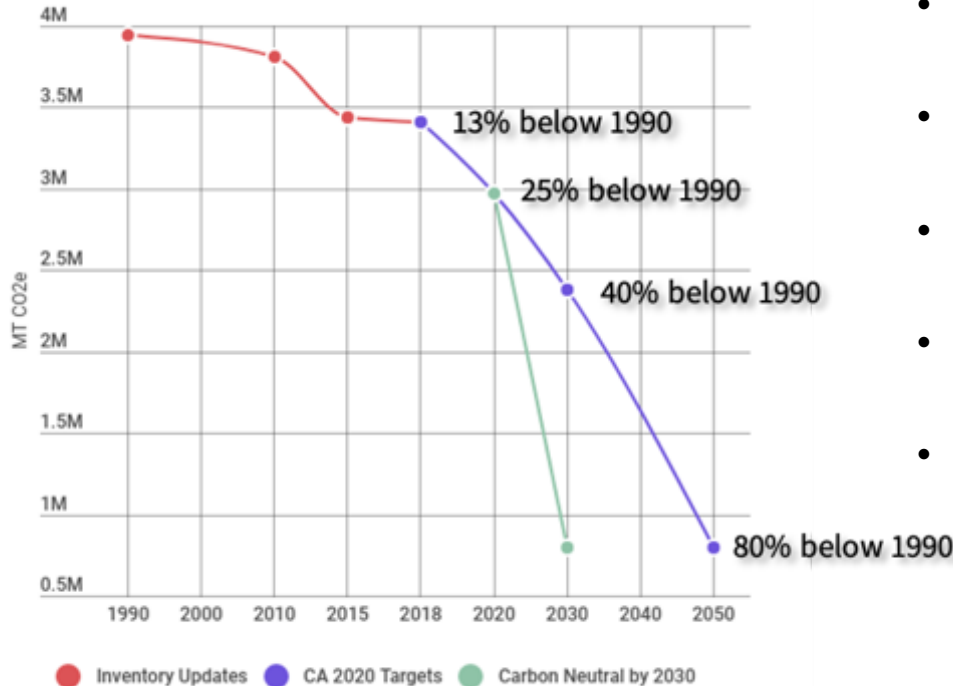


Resilience: Focus on Supporting Energy & Water Independence

- ✓ Financial sustainability



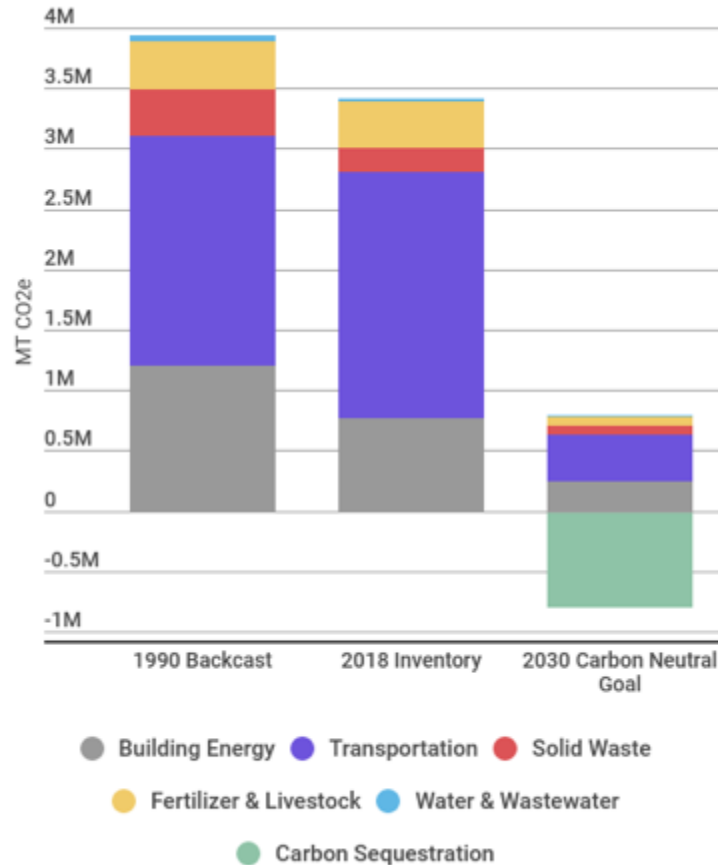
- **Sonoma County's Pathway to 2030 Goal**



- **State Climate Goals**

- 40% below 1990 levels by 2030 (AB32 and SB32)
- Carbon neutral by 2045 (Executive Order B-55-18)
- All retail electricity in CA carbon-free by 2045 (SB100)
- Ban sale of new gas-powered cars and trucks by 2035 (Executive Order N-79-20)
- Protect 30% of California's lands and waters by 2030 (Executive Order N-82-20)

REDUCTION GOALS TO ACHIEVE CARBON NEUTRALITY BY 2030



Initiative	Sector	Strategy
Decarbonization	Building Energy	<ol style="list-style-type: none"> 1. All-Electric Buildings Campaign 2. Carbon-Free Electricity
	Transportation	<ol style="list-style-type: none"> 3. Drive Less Sonoma County Campaign 4. EV Access for All Partnership 5. Sonoma County Vehicle Miles Traveled Mitigation Bank
	Solid Waste	<ol style="list-style-type: none"> 6. Zero Waste by 2030
Sequestration and Ecosystem Services		<ol style="list-style-type: none"> 7. Protect Existing Carbon Stocks 8. Increase Carbon Stocks 9. Scale Up Infrastructure for Sequestration
Resilience and Adaptation		<ol style="list-style-type: none"> 10. Energy Grid for the Future 11. Climate Resilient Sonoma County
Equity and Community Engagement		<ol style="list-style-type: none"> 12. Engage, Educate, and Empower for Equitable Climate Action 13. Equity and Climate in All Policies

More information on the Sonoma Climate Mobilization: rcpa.ca.gov/projects/sonoma-climate-mobilization/

Strategy	Objective
3. Drive Less Sonoma County Campaign	<ul style="list-style-type: none"> ✓ Develop “Next generation” transit system (<i>using Future of Transit ad hoc recommendations</i>)
4. EV Access for All Partnership	<ul style="list-style-type: none"> ✓ Develop public and workplace charging stations ✓ Support use of E-bikes and other lightweight EVs ✓ Create accessible and affordable EV assistance service
8. Increase Carbon Stocks	<ul style="list-style-type: none"> ✓ Support local agricultural producers to scale up carbon sequestration
12. Engage, Educate, and Empower for Equitable Climate Action	<ul style="list-style-type: none"> ✓ Increase diversity of representation on Climate Action Advisory Committee ✓ Develop strategic engagement, education, and empowerment campaign ✓ Partner with community-based organizations to support campaign
13. Equity and Climate in All Policies	<ul style="list-style-type: none"> ✓ Research national models of equity impact assessments ✓ Implement equity impact assessment process and tools ✓ Develop checklist to support equity and climate in all policies



2021

Create Sonoma Climate
Mobilization Implementation
and Funding Plan

Identify and secure funding
sources

Initiate strategic engagement,
education and empowerment
campaign



2022–2024

Secure funding
Create monitoring process and
tools

Implement strategies

Monitor progress and adjust
plans as needed



2025–2030

Secure funding
Implement strategies
Monitor progress and adjust
plans as needed

More information on the Sonoma Climate Mobilization: rcpa.ca.gov/projects/sonoma-climate-mobilization/

QUESTIONS?

THANK YOU!

Tanya Narath
Director of Climate Programs
Tanya.Narath@rcpa.ca.gov



1. All Electric Buildings Campaign

Accelerate electrification of existing buildings and electrify all new buildings.

- ✓ Existing buildings: energy efficient and all electric
- ✓ New buildings: all electric
- ✓ Integrate equity

2. Carbon-Free Electricity

Accelerate the transition to 100 percent carbon-free electricity.

- ✓ 100% renewable and/or carbon-free energy
- ✓ Solar plus battery storage
- ✓ Demand response using capable technologies (e.g., appliances, cars, batteries)

3. Drive Less Sonoma County Campaign

Make it easier to get around Sonoma County without a car.

- ✓ Low-stress bike and pedestrian facilities
- ✓ Vision Zero Action Plan
- ✓ “Next generation” transit system
- ✓ SCTA Comprehensive Transportation Plan

4. EV Access for All Partnership

Accelerate the transition to 100 percent electric vehicles (EV) for all transportation needs not met by biking or walking.

- ✓ > 10,000 public and workplace charging stations by 2027
- ✓ Accessible and affordable EVs
- ✓ Electric bicycles, other lightweight electric utility vehicles
- ✓ Heavy-duty EVs

5. Sonoma County Vehicles Miles Traveled (VMT) Mitigation Bank

Develop new funding sources for transportation projects that reduce VMT.

- ✓ Funding for transportation demand management (TDM) and VMT reducing projects programs

6. Zero Waste by 2030

Develop policies, programs, and education campaigns to eliminate waste sent to landfills.

- ✓ Zero organics to landfill by 2030
- ✓ Countywide construction and demolition ordinance
- ✓ Community-wide zero waste campaign with focus on reuse and reduced consumption

7. Protect Existing Carbon Stocks

Maintain the carbon that is currently held in soil and plants.

- ✓ Forest management practices
- ✓ Strategic land protection and stewardship actions
- ✓ Land use policies
- ✓ Countywide fire safe landscape practices

8. Increase Carbon Stocks

Capture more carbon in soils and plants

- ✓ Carbon farming
- ✓ Increase urban forest cover
- ✓ Regenerative land management practices at city-scale

9. Scale Up the Infrastructure for Sequestration

Build the physical, social, and economic capacity for successful carbon sequestration.

- ✓ “Sequester local” program
- ✓ Resource Conservation District funding for carbon farming
- ✓ Nursery stocks, compost, supplies
- ✓ Training for professionals and residents

10. Energy Grid for the Future

Increase energy grid resilience and prepare for electrification of buildings and transportation systems.

- ✓ Community and municipal microgrids
- ✓ Advocate for reliable, robust energy grid

11. Climate Resilient Sonoma County

Address the economic, social, and environmental impacts of future wildfires, floods, extreme heat, drought, sea level rise, and other climate change risks.

- ✓ Local vegetation/forest management and fire protection corps
- ✓ Inclusion of climate adaptation and resiliency strategies in general plans
- ✓ Urban Land Institute Resilience Advisory Services Panel

12. Engage, Educate, Empower for Equitable Climate Action

Coordinate local leaders and develop a campaign to engage vulnerable residents and key stakeholders in the Sonoma Climate Mobilization.

- ✓ Strategic engagement, education, and empowerment campaign
- ✓ Partner with community-based organizations
- ✓ Use community inputs to prioritize actions

13. Equity and Climate in All Policies

Develop processes and tools to support the inclusion of equity and climate in all policies.

- ✓ Equity impact assessment process and tools
- ✓ Checklist to evaluate policies relative to climate and equity goals
- ✓ Sonoma County Climate Resilience Index