



# City of Sebastopol Community Newsletter

[www.CityofSebastopol.org](http://www.CityofSebastopol.org)

## October 23 - October 29 Special Weekly Edition of Sebastopol Community Newsletter

Please visit the City of Sebastopol website at [www.CityOfSebastopol.org](http://www.CityOfSebastopol.org) for the most up-to-date local information on the coronavirus crisis. There is a page dedicated entirely to the crisis, the [Novel Coronavirus \(COVID-19\) Resource Page](#), where you will find specific resources and answers to many questions that you may have. The City of Sebastopol is also on [Facebook](#), [Twitter](#), and [NextDoor](#).

[View as Webpage](#)

KNOW SOMEONE INTERESTED IN RECEIVING THIS NEWSLETTER? FORWARD THIS EMAIL.

WAS THIS EMAIL FORWARDED TO YOU BY SOMEONE ELSE?

[Click Here To  
Subscribe](#)



## PROTECT YOUR FAMILY AND COMMUNITY FROM COVID-19.



Cover



Wash



Remove



Shower



Clean

[covid19.ca.gov](http://covid19.ca.gov)

PLAN FOR A SAFE THANKSGIVING CELEBRATION

As many people in the United States begin to plan for fall and winter holiday celebrations, [CDC](#) offers the following considerations to help protect individuals and their families, friends, and communities from COVID-19.

Thanksgiving is a time when many families travel long distances to celebrate together. [Travel](#) increases the chance of getting and spreading the virus that causes COVID-19. Staying home is the best way to protect yourself and others. If you must travel, be informed of the [risks involved](#).



### Lower Risk Activities

- Having a small [dinner](#) with only people who live in your household
- Preparing traditional family recipes for family and neighbors, especially those at higher risk of severe illness from COVID-19, and delivering them in a way that doesn't involve contact with others
- Having a virtual dinner and sharing recipes with friends and family
- Shopping online rather than in person on the day after Thanksgiving or the next Monday
- Watching sports events, parades, and movies from home

### Moderate Risk Activities

- Having a small outdoor [dinner](#) with family and friends who live in your community
  - Lower your risk by following CDC's recommendations on [hosting gatherings or cook-outs](#).
- Visiting pumpkin patches or orchards where people use hand sanitizer before touching pumpkins or picking apples, wearing masks is encouraged or enforced, and people are able to maintain social distancing
- Attending a small outdoor sports events with safety precautions in place

### Higher Risk Activities

Avoid these higher risk activities to help prevent the spread of the virus that causes COVID-19:

- Going shopping in crowded stores just before, on, or after Thanksgiving
- Participating or being a spectator at a crowded race
- Attending crowded parades
- Using [alcohol or drugs](#), which can cloud judgement and increase risky behaviors
- Attending large indoor gatherings with people from outside of your household

---

## SONOMA COUNTY GUIDANCE FOR A COVID SAFE HALLOWEEN



The County of Sonoma has provided guidance for enjoying safe Halloween and Día de los Muertos activities this year.

With Halloween and Día de los Muertos quickly approaching, the County is reminding residents to plan ahead and celebrate safely this year by avoiding gatherings. Many traditional holiday activities promote gatherings and mixing of households, which increase the risk of transmitting COVID-19. The County of Sonoma Department of Health Services has issued guidance to help our community stay safe as we celebrate

Halloween and Dia de los Muertos.

See the full [Press Release](#) for guidance on what activities are and are not permitted as well as a list of safe alternatives.

The County's Halloween and Dia de los Muertos guidance is especially critical as the COVID-19 virus continues to circulate in Sonoma County, which remains in the most-restrictive purple tier within the state's [Blueprint for a Safer Economy](#). Coronavirus can spread asymptotically through droplets from coughing, sneezing and talking, by aerosols caused by normal breathing, and through virus particles on hard surfaces. These forms of transmission are difficult to avoid with "normal" Halloween and Dia de los Muertos activities.

No matter how you choose to celebrate, Sonoma County asks community members to avoid close contact with those outside your household, wear proper face coverings, practice hand hygiene, and stay home when not feeling well. By planning early and identifying safe options you can have a healthy holiday and keep loved ones, friends, neighbors, and vulnerable community members safe.

**Please note that Florence Avenue WILL NOT be blocked off this year.**

In accordance with state and county health guidance, while trick-or-treating is strongly discouraged, outdoor gatherings are permitted if there are no more than 12 individuals, and no more than 3 households, and where people maintain at least 6-foot distancing with those not in their households, wear face coverings and practice hygiene standards.

Examples of safe Halloween alternatives that are encouraged, within specific guidelines, include:

- Online parties
  - Car parades
  - Drive-in movie nights
  - Halloween themed meals at outdoor restaurants
  - Outdoor, drive-through haunted houses
-

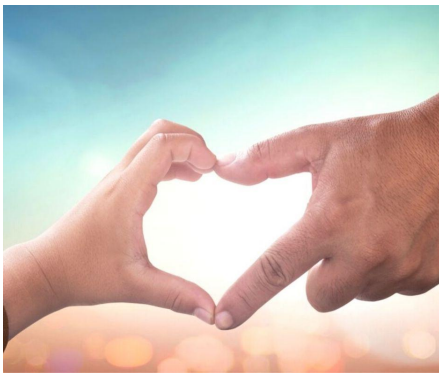


IT'S UP TO YOU.  
FIGHT THE FLU.

#SonomaStrong



## NOMINATE A LOCAL WHO MAKES A DIFFERENCE



Do you know a Sebastopol local who makes a difference in the community? The Locals Who Make a Difference (LWMAD) program recognizes and acknowledges Sebastopol community members for their contributions in helping to make Sebastopol a better place to live. Nominations for the next LWMAD honoree will close on **November 1**. To nominate someone from the Sebastopol community, learn about past honorees or the program, visit the [Locals Who Make a Difference](#) section of the City website.

## SOME SONOMA COUNTY MAYORS ARE HAVING A VOTER TURNOUT COMPETITION



# Vote Safe. Vote Early. Vote.



Some of our Sonoma County Mayors have a good natured competition going on to see whose city or town has the best voter turnout.

As of October 26th, the City of Sonoma is currently in the lead, with a 53.07% turnout, with the City of Sebastopol right behind with 52.68%! The other cities are all under 50% turnout so far, but Healdsburg and Petaluma are almost there! The Sonoma County Registrar of Voters is keeping track to see what city/town gets bragging rights to the highest voter turnout!

## SONOMA COUNTY REGISTRAR WARNS OF UNAUTHORIZED BALLOT DROP BOXES

**Santa Rosa, CA – October 13, 2020** – Deva Marie Proto, Sonoma County Clerk-Recorder-Assessor-Registrar of Voters, is alerting voters that there have been recent reports in California of groups promoting unofficial ballot drop boxes that are not affiliated with county elections offices. In some instances, these groups are promoting their unauthorized ballot drop boxes as “official” or “secure.” The use of unauthorized, non-official ballot drop boxes is prohibited by state law.



At the same time, Ms. Proto seeks to reassure voters that the staffed ballot drop box located outside of the Registrar of Voters Office during business hours is legitimate. “Some voters have expressed concern that the individuals taking ballots outside of our office are scammers,” said Ms. Proto. “This is absolutely not the case. They are official elections employees. The reason we are having them collect ballots outside is to minimize the number of people going in and out of our office during the COVID-19 pandemic.”

Any voter who wants to return their ballot at a drop box should only use official county drop boxes. Locations of all 20 official drop boxes in Sonoma County can be found at <https://sonomacounty.ca.gov/where-to-vote>. Official county drop boxes are clearly recognizable, designed to meet state standards for security, and bear the official Sonoma County Registrar of Voters logo.

According to Ms. Proto, “depositing your ballot at an official drop box is very safe. Not only is each box physically secure, but we have strict chain of custody procedures in place requiring two ballot retrievers to unlock, count, document, and secure the ballots from each drop box on the team’s route.” Proto added that law enforcement has been informed of the box locations and will be regularly monitoring them for any suspicious activity.

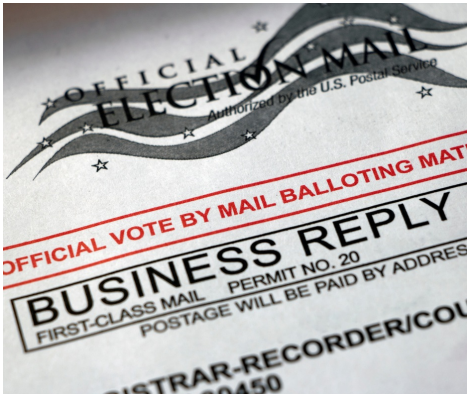
To report any concerns, call (707) 565-6800, email [rov-info@sonoma-county.org](mailto:rov-info@sonoma-county.org), or

visit the Registrar of Voters Office in person at 435 Fiscal Drive, Santa Rosa, Monday through Friday, 8 a.m. to 5 p.m. (excluding holidays).

See the full press release [here](#) including images of the official Sonoma County ballot drop boxes.

---

## VOTER RESOURCES



All registered voters in California will be sent a vote-by-mail ballot with a prepaid postage return envelope for the November 3, 2020 Election. Track your ballot using California's official "Where's My Ballot?" tool at [wheresmyballot.sos.ca.gov](http://wheresmyballot.sos.ca.gov).

Click [here](#) for a complete list of in-person voting locations and secure ballot drop-box locations.

---

## TAKE THE MAYOR'S CHALLENGE AND VOTE!

Check out the video [here](#).

---

## COVID-19 & HEALTH UPDATES

### CURRENT STATE TIER ASSIGNMENT FOR SONOMA COUNTY: PURPLE

Based on this week's numbers, Sonoma County remains in the purple tier of California's Blueprint for a Safer Economy. This is the most restrictive level and is based on two main metrics — new daily cases per 100,000 and test positivity rate.

We have an adjusted new case rate of 11.9. This is beyond the benchmark of 7, which is what is required to move us into a less restrictive tier. We have a test positivity rate of 5.1%, which is below the benchmark of 8.0% to move us into the next tier. We have an equity testing positivity rate of 7.5%, which is also below the benchmark 8.0% to move us to the next tier.

In order to move to the red tier, Sonoma County must either: 1) meet the state benchmarks for all the three metrics above for two weeks or 2) meet the testing positivity benchmark and have an equity metric rate of less than 5% for two weeks, even if the case rate is still above the benchmark.

Current status and information about tiers and allowable activities can be found at [California's Blueprint for a Safer Economy](#).

---

## EXPANDED FREE COVID-19 POP UP TEST SITES

The County of Sonoma is doubling the number of pop-up test sites available to the public beginning Tuesday, Oct. 20 and is encouraging residents, particularly those disproportionately impacted by the coronavirus, to be tested regardless of whether they have symptoms or have been exposed to someone who is COVID-19 positive. [Read the press release.](#)

---

## OUTDOOR PLAYGROUNDS CAN REOPEN WITH COVID-19 RESTRICTIONS

The California Department of Public Health announced that outdoor playgrounds and other outdoor recreational facilities can reopen. Visitors to outdoor community playgrounds must comply with the following requirements:



- Face masks over the mouth and nose are required for everyone 2 years of age or older with caregiver supervision at all times to ensure face mask use.
- Do not use the playground when different households are unable to maintain a physical distance of 6 feet or when the capacity limit has been reached.
- Caregivers must monitor to keep adults and children from different households at least 6 feet apart.
- Consider coming on different times or days to avoid wait times and potential crowded times.
- No eating or drinking in playground, to ensure face masks are worn at all times.
- Wash or sanitize hands before and after using the playground.
- Elderly and persons with underlying medical conditions should avoid playground when others are present.
- Limit visit to 30 minutes per day when others are present.

[Learn more, about the state's guidelines for outdoor playgrounds.](#)

---

## COUNTY ISSUES AMENDMENT TO HEALTH ORDER



On September 23 Sonoma County issued *Amendment No. 1* to Health Order C19-15, which was originally issued in June. The amendment aligns the local order with [California's Blueprint for a Safer Economy](#)

For now, the alignment makes only minor changes, such as allowing childcare cohorts to increase from 12 to 16 students. As the county progresses through each tier, [state guidelines](#) will dictate how and when businesses and activities are allowed.

It's important to remember that this should not be seen as a return to normal. The virus is still not contained and continues to present a clear and present danger to the community. This is especially true of socializing and/or working indoors with non-household members. We remain particularly concerned with those most at-risk for serious health consequences and how the activities of those at lower risk can impact the most vulnerable.

---

## FOCUSING ON EQUITY IN CALIFORNIA'S TIERED SYSTEM

The state is introducing a new health equity measure that will factor into tier placement. To be allowed to move or remain in less restrictive tiers, counties must reduce disparities in testing positivity between the most and least socioeconomically advantaged regions of the community, as ranked by the Healthy Places Index. The measure also ensures that counties provide culturally competent and linguistically congruent measures, including contact tracing and wrap around services for isolation/quarantine. The state of California assures us that more detailed information on this measure will soon be released.

---

## SCHOOL WAIVERS UPDATE

When schools, public or private, are able to reopen for in-person instruction is determined not by the county Health Officer but by where Sonoma County stands in its efforts to slow the spread of COVID-19.

The state Department of Public Health is working closely with the Sonoma County Office of Education to determine guidelines for specialized in-person instruction.

Although we remain in the state's purple tier, recent improvements in our latest case rates mean that we can now consider waiver applications from schools for in-person learning under specific conditions.

For example, schools must submit comprehensive plans to address a spectrum of safety topics. Each school also must consult with their staff, parents, and community organizations about how to address critical concerns, such as doing their own surveillance testing and contact tracing if there is a COVID-positive student or staff member. Some of the other key areas that require detailed plans as outlined by the California Department of Public Health include:

- The regular cleaning and disinfecting of classrooms and facilities.
- The flow of individuals through entrances and exits, and all other movement within the school.
- Mandates about face coverings and other essential gear.
- Healthy hygiene practices.
- Physical and social distancing.
- Staff training and family education.
- Triggers for switching to distance learning if a class or the school must quarantine.
- And communication plans for parents and staff.

The state of California is urging schools to focus on providing specialized, targeted services for English learners, students with disabilities, students requiring access to the internet and devices for online learning. The state is also asking for plans for those who are most at-risk and have the highest need including students experiencing homelessness, neglect, or abuse.

Doctor Mase is currently reviewing the waivers submitted to the County and anticipates having more information available at the end of this week.

We all are concerned about the impacts of the COVID-19 pandemic on education and are eager to see our children back in classrooms. It's up to all of us to slow the spread enough that students can be back in classrooms - and stay in class.

---

## SHOULD YOU GET A FLU VACCINE?

As the flu season approaches, health experts are concerned that adding another respiratory illness



to the healthcare system during the COVID-19 pandemic could overburden providers and facilities. Getting the flu vaccine can help keep you and your loved ones healthy, while helping conserve local healthcare resources.

The CDC recommends that all people 6 months and older get a flu vaccine every year, and we know it's especially important this year. Getting vaccinated now, before influenza is widespread in the community, can help ensure you are protected.



Though the flu vaccination is not 100% effective in stopping a person from getting the flu, a vaccine can make flu symptoms less severe. As we deal with this pandemic, having milder symptoms will help reduce hospitalization rates. Additionally, if fewer people have flu-like symptoms there will be more testing capacity for those who experience fevers, chills, and respiratory issues associated with both conditions. Finally, because it is possible for people to have COVID-19 and the flu simultaneously, patients can save themselves the discomfort and possible serious consequences of having both viruses in their systems at the same time.

---

## **SONOMA COUNTY COVID-19 CASE DATA**

Click [here](#) to view Sonoma County's COVID-19 case data.

---

## **SONOMA COUNTY COVID-19 TESTING INFORMATION**

Click [here](#) to view Sonoma County's COVID-19 testing information.

---

## **REUSABLE BAGS ARE NOW ALLOWED IN GROCERY STORES AND RETAIL ESTABLISHMENTS**

# COVID -19 BAG USE

## USO DE LA BOLSA REUTILIZABLE DURANTE COVID -19

### CUSTOMERS SHOULD LEAVE REUSABLE BAGS IN THE SHOPPING CART WHEN CHECKING OUT.

LOS CLIENTES DEBEN DEJAR LAS BOLSAS REUTILIZABLES EN EL CARRITO DE COMPRAS AL MOMENTO DE HACER SU PAGO.



### CUSTOMERS SHOULD NOT PUT REUSABLE BAGS ON THE CHECKOUT CONVEYOR BELT.

LOS CLIENTES NO DEBEN PONER LAS BOLSAS REUTILIZABLES EN LA BANDA TRANSPORTADORA QUE ESTÁ EN LA CAJA DE PAGO.



### CUSTOMERS MUST BAG THEIR OWN PURCHASES.

LOS CLIENTES DEBEN PONER LAS COMPRAS DE MERCADO EN SUS BOLSAS REUTILIZABLES ELLOS MISMOS.



### STORES MAY PROVIDE A REUSABLE BAG OR RECYCLED PAPER BAG TO CUSTOMERS FOR A MINIMUM 10¢ CHARGE.

LAS TIENDAS PUEDEN PROPORCIONAR UNA BOLSA REUTILIZABLE O BOLSA DE PAPEL RECICLADO A LOS CLIENTES POR UN CARGO MINIMO DE .10 CENTAVOS.



[ZEROWASTESONOMA.GOV/CARRYOUTBAGS](https://zerowastesonoma.gov/carryoutbags) ECO-DESK 565.3375



SONOMA COUNTY WASTE MANAGEMENT AGENCY (ZERO WASTE SONOMA)  
WASTE REDUCTION PROGRAM FOR CARRYOUT BAGS ORDINANCE 2014-2

LA AGENCIA SONOMA COUNTY WASTE MANAGEMENT (ZERO WASTE SONOMA) PROGRAMA DE REDUCCIÓN DE RESIDUOS PARA LA ORDENANZA 2014-2 DE BOLSAS PLÁSTICAS DESECHABLES



JUNE, 2020

## HANDWASHING STATION LOCATIONS IN DOWNTOWN SEBASTOPOL

In an early response to help make our community safer during the COVID-19 pandemic, the City of Sebastopol set up a number of handwashing stations throughout the downtown area in mid-March.

In the meantime, we've added more locations and re-located some of the stations to be more convenient, including new portable restrooms and handwash facilities on Morris Street for homeless support services.

## Current locations are:

- 1) City Parking Lot at Main St. and Burnett
- 2) North Main St., mid-block (south side of street between Bodega and Wilton)
- 3) 328 N. Main Street - On sidewalk entrance Community Bank parking lot
- 4) Adjacent to southwest corner of Town Plaza parking lot against rear wall of Silk Moon
- 5) Sebastopol Ave. (Route 12) at alley between Ramen Gaijin and WestAmerica Bank
- 6) 6902 Sebastopol Ave - Screamin' Mimi's Ice Cream- at side window on Petaluma Ave
- 7) & 7A) Outside public restrooms on east side of Town Plaza. There are also portable toilets at this location.
- 8) & 8A) Morris St. north of Laguna Park Way, northeast side of street. There are also portable toilets at this location



# WEAR A MASK.

Slow the spread.

[covid19.ca.gov](https://covid19.ca.gov)



Coronavirus spreads when an infected person speaks, sneezes, or coughs within 6 feet of others. You may have the virus and spread it even if you feel well.

To prevent infection, you must cover your nose and mouth when outside your home. So wearing a mask is now required statewide. Wearing a mask or cloth face covering can slow the spread of COVID-19 by limiting the release of virus into the air. It also reinforces physical distancing, and shows you care about the health of others.

Don't wear your mask under your nose or just on your chin. A mask is only effective if it covers both ways you breathe.

### Who needs a mask?

- Anyone going outside their home
- Workers in customer-facing industries
- Workers in offices, factories, or any group setting
- Doctors, nurses, and other health care professionals
- Other workers, as dictated by [industry guidance](#)

### Who shouldn't wear a mask?

- Children under 2 years old
- Anyone with respiratory issues where it would impede their breathing
- Anyone unable to remove the mask without help
- Anyone with a medical condition, mental health condition, or disability that does not allow them to wear a mask

See a [complete list](#) of who should not wear a mask.

### When should you wear a mask?

You should wear a mask or face covering whenever you'll be around someone you don't live with, including:

- In any indoor public space
- When waiting in line
- When getting health care
- On public transportation or when ride-sharing
- At work, when near others or moving through common areas
- Outdoors, if you can't stay 6 feet away from others

### When can you take off your mask?

There are times when it's okay to take your mask off when you're away from home, such as:

- When eating or drinking
- If a hearing-impaired person needs to read your lips
- If wearing a face covering imposes a risk to you at work – for example, if it could get caught in machinery
- When you're not sharing a common area, room or enclosed space with others
- When you are getting a service to the nose or face
- When outdoors in public and can stay six feet from others

You should replace the mask as soon as you can after these activities to reduce the risk of infection.

For more information visit <https://covid19.ca.gov/masks-and-ppe/>

---

## NEED HELP WITH ESSENTIAL RESOURCES?

Visit the [2-1-1 Free Referral Service](#) website if you have questions or needs.

For additional assistance, resources, and help with essential needs, see the [SoCo Emergency](#) resources webpage.

---

## ESSENTIAL SERVICES WILL CONTINUE:

- **The City of Sebastopol will not turn off water due to nonpayment.** The City recognizes the hardship that the pandemic and resulting Shelter in Place Orders, have created in our community, and will temporarily suspend non-emergency turnoffs and late fees.
- **PG&E will not cut off power due to nonpayment.** PG&E voluntarily implemented a moratorium on service disconnections for non-payment, effective immediately. This suspension will apply to both residential and commercial customers and will remain in effect until further notice.
- **Recology will not suspend trash service due to nonpayment.** Recology understands that customers are starting to request delay of payments or payment plans due to the circumstances, and they are sensitive to what the community is going through. Recology will not stop service due to non-payment at this time.

Click [here](#) for more information on Essential Services during the COVID-19 Pandemic.

---

## WEEKLY COVID-19 VIDEO UPDATES

See the City's [Coronavirus \(COVID-19\) Resource Page](#) for recent City, County, and State video updates.

# THE SONOMA COUNTY AREA AGENCY ON AGING REQUESTS PUBLIC PARTICIPATION IN THE OLDER ADULT NEEDS ASSESSMENT SURVEY

Please participate in a Needs Assessment Survey developed by Supervisor Zane's Older Adult Taskforce in partnership with Dr. Mase and non-profit leadership. Isolation presents its own health risk for older adults and responses to this Needs Assessment will help the County of Sonoma improve the health and quality of life for older adults.



Creating Safe Social Spaces is a key part of the Older Adult Taskforce. Dr. Mase has authorized that if following the guidelines below, Safe Social Spaces are allowed and encouraged at independent living communities, low income senior housing properties, senior centers etc. The taskforce is developing additional messaging materials.

- Signage to support physical distancing;
- Wear Your Masks;
- Hand Washing;
- Hand Washing Stations;
- Outside Spaces are better than Inside;
- Groups of 10 or less, following these guidelines, are acceptable.

[Needs Assessment Survey - English](#)

[Needs Assessment Survey - En Español](#)

---

## WARM LINE FOR EMOTIONAL & MENTAL HEALTH SUPPORT



## WARM LINE FOR EMOTIONAL & MENTAL HEALTH SUPPORT

The last few months have been very difficult for everyone in our community. You may be feeling stressed, isolated, depressed, and anxious. You do not need to suffer alone. Help is available.

**Please call the Sonoma County Warm Line  
for Emotional and Mental Health Support:**

**(707) 565-2652**

**Or visit [SoCoEmergency.org](http://SoCoEmergency.org)**

*This free and private warm line is available seven days  
a week from 10 a.m. - 7 p.m. Telephone interpretation  
for other languages is available.*



---

## CREDIBLE SOURCES FOR COVID-19 UPDATES

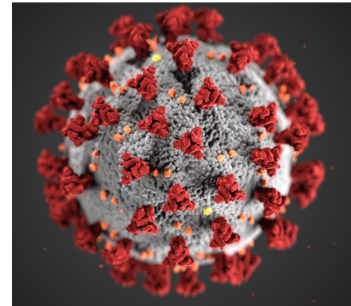
[California Department of Public Health](#)

[County of Sonoma Department of Health Services](#)

[SoCo Emergency Page](#)

[Centers for Disease Control and Prevention \(CDC\)](#)

[World Health Organization \(WHO\)](#)



---

## LEGAL AID'S DISASTER TEAM IS HERE TO HELP PEOPLE IMPACTED BY COVID-19

If you have employment questions, benefits questions, or any other legal issues related to the pandemic, please contact Legal Aid of Sonoma County.

# Legal Aid of Sonoma County

## Disaster Relief Team

*The Disaster Relief Team has assisted hundreds of survivors with their recovery.*

### We assist disaster survivors with:

- ❖ Disaster Unemployment Insurance
- ❖ EDD Appeals
- ❖ Price Gouging
- ❖ FEMA Benefits
- ❖ Information and Referrals
- ❖ Other legal issues resulting from a disaster or declared emergency, including COVID-19

Contact us for a free, confidential appointment with our Disaster Relief Team to discuss your legal rights or navigate the recovery process.

### Contact Us:

Legal Aid Disaster Relief COVID-19  
Response Hotline  
**(559) 429-6974**

**Para asistencia en español, por favor llame al (707) 542-1290.**



Legal Aid's mission is to promote social justice and advance basic human rights for vulnerable people in our community.

### Our Team:

**Kendall Jarvis, JD, LMN**  
*Disaster Relief Attorney*  
[kjarvis@legalaidsc.com](mailto:kjarvis@legalaidsc.com)

**Kristopher Lopez, JD**  
*Disaster Relief Attorney*  
[klopez@legalaidsc.com](mailto:klopez@legalaidsc.com)

**Tomás González**  
*Disaster Relief Caseworker*  
[tgonzalez@legalaidsc.com](mailto:tgonzalez@legalaidsc.com)

---

## FIRE SAFETY & PREPAREDNESS

---

### HAVE YOUR GO BAGS READY!

**Are you prepared to evacuate if necessary?  
Are your go bags ready?**

Even though Sebastopol hasn't been under any evacuation orders or warnings during the recent fire incident, all citizens should be prepared to evacuate in the event one becomes necessary.

Everyone in your family should have their own Go Bag that contains a minimum of 72 hours worth of essential supplies. Personalize kits and keep them where they can easily be reached—at home, in the car, at work or school.

This is particularly important during fire season when a quick getaway may be needed. A backpack or other small bag is best for these kits so that they can be easily carried in an evacuation. During the COVID-19 pandemic additional considerations for your Go Bag include cloth face coverings, hand sanitizer, anti-bacterial wipes, and a thermometer.



[Build A Personal Go Bag](#)

---

## SIGN UP FOR ALERTS

**Make sure that you have signed up for:**

[SoCoAlerts](#); and

Nixle Alerts (either [online](#) or by texting your zip code to 888777)

It is important to register for both types of alerts. If you receive Nixle alerts, read them thoroughly and click on any links.

Text Fire or Fuego (for Spanish) to 211-211 for updates.

More information on alerts may be found [here](#).

---



# KNOW YOUR ALERTS

The City of Sebastopol uses multiple notifications and warning systems to make sure emergency alerts are delivered to the people who need the information.



## Emergency Alert System (EAS) - No Registration Required

National public warning system that will interrupt local broadcast tv and radio programming to provide an alert in the event of a large-scale emergency.



## Wireless Emergency Alerts (WEA) - No Registration Required

Urgent alerts sent as text-like messages to your mobile phone based on your location (you will only receive notification if you are in the area of the emergency). WEAs have three alert categories– Imminent Threat, AMBER, Presidential. You must keep the factory settings on to your WEA- capable phone to receive a WEA.



## SoCoAlert - Registration Required

Emergency notification service providing Sonoma County first responders the ability to alert residents by landline or mobile phone, text message and email about imminent threats to life and property in specific impacted areas. Register all addresses that you'd like to receive alerts for (work, child's school, etc.). You don't have to be in the location of the emergency to receive alert.

Must register at [SoCoAlert.com](http://SoCoAlert.com) OR call (866) 939-0911, press "0" at the menu, ask operator for assistance with registering for SoCoAlert.



## Nixle - Registration Required

Community information service managed by Sonoma County Fire District and Sonoma County Sheriff's Office. Community messages are sent to email, and for critical emergencies, Alert messages are sent via text message and email (notifications are NOT delivered by phone call). Customize your settings at [nixle.com](http://nixle.com) to control which types of notifications you receive. Must register at [nixle.com](http://nixle.com) or text your zip code to 888-777



## Local Radio and Television

Local news broadcasters to provide updates during an emergency. Tune radio to 1350 AM, 103.5 FM, 100.1 FM, 89.1 FM (bilingual), 98.7 FM (Spanish); watch preferred local TV news channel.



## Hi/Lo Sirens

Sebastopol police cars and fire department vehicles are outfitted with new Hi/Lo sirens, a different sound than traditional sirens. This European-style, 2-tone siren will only be used in an emergency to alert residents within specific areas of the need to evacuate.

### Other Ways to Stay Informed

Sebastopol Police Dept.   
Sebastopol Fire Dept.   
City of Sebastopol  



More information on emergency alerts and notifications at [SoCoEmergency.org](http://SoCoEmergency.org)

Thank you to the City of Santa Rosa for sharing their graphics.

**FOR NON-EMERGENCY SUPPORT  
FOR FIRES IN SONOMA COUNTY  
DIAL 2-1-1 OR TEXT "FIRE" TO 211-211**

**PARA AYUDA CON LOS INCENDIOS EN EL CONDADO  
DE SONOMA QUE NO SEA DE EMERGENCIA,  
MARQUE 2-1-1 O MANDE UN MENSAJE DE TEXTO  
CON LA PALABRA "FUEGO" AL 211-211.**

**FREE + AVAILABLE 24/7 GRATIS + DISPONIBLE 24/7**



Get Connected. Get Help.™



POWERED BY: United Way of the Wine Country

# WILDFIRE IS COMING. ARE YOU READY?

**As we have all seen with recent events, fire season is upon us. While Sebastopol did not come under an evacuation warning or order, we must continue to prepare.**

All citizens are urged to step up your emergency planning for wildfires, including maintaining defensible space around the home, having an emergency plan in place, preparing a "go-bag" (including masks, gloves, and sanitizer), evacuating if ordered, and knowing several routes out of town. See the links below for more information and resources.

[Homeowners Checklist: How to Make Your Home Fire Safe](#)  
[Ready, Set, Go! Your Personal Wildfire Action Plan](#)  
[Defensible Space and Hardening Your Home](#)  
[Download and Complete your Personal Emergency Plan](#)  
[Resources for Access & Functional Needs Populations](#)

Visit [readyforwildfire.org](https://readyforwildfire.org) for quick information on fire preparedness and what to pack in the event of an evacuation. COVID-19 precautions still apply, so be sure to include masks, gloves, and sanitizer in your [go-bag](#). Review the [Evacuation Plan Checklist](#) and the [Be Ready: Evacuation Timeline](#) to help you prepare.

The Sebastopol Fire Department has confirmed that there is no evacuation "Zone Number" for Sebastopol City Limits. In the event of an evacuation warning or order, it will say "City of Sebastopol" or "Sebastopol City Limits." Unincorporated Sebastopol is Zone 4. [Zone Map](#).

[Here is the current map](#) showing “Planned Evacuation Zones” in and around Sebastopol. This may change.

Governor Newsom also reassured citizens that, in the case of evacuation, planning is in place for emergency shelters that will operate under COVID-19 social distancing guidelines.

---

## BUSINESS NEWS

---

### BUSINESS LICENSE APPLICATIONS AND RENEWALS

We’re moving to a completely paperless system for business license applications and renewals. Renewal notices will be sent electronically to the email info we have on file. Make sure your contact information is updated. You can check and update your information at our renewals portal [here](#). We’re also upgrading our online business directory to allow you to make it easier for your customers to find your business. Make sure that your business information is up to date by visiting the online portal [here](#) where you can also apply for a business license. Please make sure to fill out all applicable fields. Give us a call at **(707) 823-7863** with any questions.



---

### OPEN BUSINESSES



Be sure to contact them first as this information may change from day to day.

[Sonoma West Times & News](#) list of open businesses

[Sebastopol Chamber of Commerce](#) list of open businesses

[Press Democrat](#) list of open businesses

Designated as an essential business, the Sunday Farmer’s Market on the Plaza is currently open and taking safety precautions and practicing social distancing. Check their [website](#) for more information.

The City of Sebastopol has compiled a [list](#) of open essential businesses. If your business supplies essential services, please email [business@CityOfSebastopol.org](mailto:business@CityOfSebastopol.org) with details such as offerings, days/hours and any special services like online ordering, takeout, delivery, curbside pickup, and special hours for seniors, at-risk, or first responders.

When visiting local businesses for essential needs, please wear a facial covering and maintain social distance (at least 6 feet between you and anyone outside your household).

---

### SEBASTOPOL CURB SIDE DELIVERY LOCATIONS

**The city currently has three curb side pickup locations for businesses in Downtown Sebastopol.**

**Locations:**

150 N. Main Street  
162 N. Main Street  
124 S. Main Street

The city is in the process of providing additional curb side delivery locations in an effort to help our local businesses. If your business will have curb side delivery please call **707-823-6167** or email [business@cityofsebastopol.org](mailto:business@cityofsebastopol.org) with this information as this information will help guide the City to locations that will be set aside.



---

## CITY NEWS

---

### REGULAR CITY BUSINESS CONTINUES

#### Administrative Services:

- Administrative Service staff are available by phone or email for questions. Please email [customerservice@cityofsebastopol.org](mailto:customerservice@cityofsebastopol.org); or call **707-823-7863** and leave a message and someone will respond to you.

#### Building Department:

- The Building Department is open and operating regular office hours - Monday - Thursday 7am to 5:30pm, Closed 12pm to 12:30pm.
- The Building Department is located inside the Fire Station.

#### City Manager's Office:

- City Hall is closed, but staff are available by phone or email for questions. Please email [info@cityofsebastopol.org](mailto:info@cityofsebastopol.org); or call **707-823-1153** and leave a message and someone will respond to you.
- City staff encourage the public to keep up with news and updates by following the City's [Facebook](#) page and checking out Council videos.

#### Engineering Department:

- The Engineering Department is open and operating regular office hours - Monday to Thursday 7am to 5:30pm. The Engineering Department is located in the Public Works office. Please note signage on door with instructions for safe interaction with staff.

#### Fire Department:

- The Fire Department is open and continuing to provide fire response and emergency services as usual.
- The Fire Department lobby is open during normal business hours Monday - Thursday 7am to 5:30pm, Closed 12pm to 12:30pm.

#### Planning Department:

- The Planning Department is (virtually) open Monday - Thursday 7am to 5:30pm (Closed 12pm to 12:30pm) and continues to accept applications. Staff is available via email or phone (707-823-6167). Planning is accepting new applications; please contact staff for instructions for submittals. Click [here](#) for details.

#### Police Department:

- Lobby is open to the public. For non-life-or-safety-threatening situations, we encourage the public to call the 24/7 police non-emergency line at **707-829-4400**. As always, in the event of emergency, call **911**.
- [Sebastopol Police Log October 19 - October 25](#)

#### Public Works Department:

- The Public Works Department is open and operating regular office hours - Monday to Thursday 7am to 5:30pm. Please note signage on door with instructions for safe interaction with staff.
  - Water and sewer utility systems continue to be monitored and maintained.
-

# CITY MEETINGS

All meetings will be held virtually and are open to the public to attend via web or phone link.

Agendas for upcoming meetings can be found on the City website by clicking the "[Meetings](#)" link on the home page. Agendas will contain information about participating virtually in real time when this feature is available.

## City Council Meetings:

- **Meeting Days:** First and Third Tuesday of each month
- **Meeting Time:** 6pm
- **Livestream Link:** <http://bit.ly/sebcctv>
- To submit comments before the meeting:
  - **For Items Not on the Agenda:** Members of the public may submit written emails/comments for items not on the agenda either by email as a public record or by public comment during the public comment period of the virtual City Council meeting. All written emails/comments will be provided to the entire City Council as a public record but will not be read into the minutes at the City Council meeting. Written emails/comments should be received by 5:00 pm of the Council Meeting Date for submission to the entire City Council prior to the meeting and will be included as a part of the record of the meeting. Please submit your comments via email for this meeting to [mgourley@cityofsebastopol.org](mailto:mgourley@cityofsebastopol.org)
  - **For Items Listed on the Agenda:** Members of the public may submit written emails/comments for items listed on the agenda either by email as a public record or by public comment during the public comment period of the agenda item during the virtual City Council meeting. **Email comments must identify the Agenda Item Number in the subject line of the email.** All written emails/comments will be provided to the entire City Council as a public record but will not be read into the minutes at the City Council meeting. Written emails/comments should be received by 5:00 pm of the Council Meeting Date for submission to the entire City Council prior to the meeting and will be included as a part of the record of the meeting. Please submit your comments via email for this meeting to [mgourley@cityofsebastopol.org](mailto:mgourley@cityofsebastopol.org)
- **Next Meeting: City Council Meeting of November 3, 2020 @ 6:00 PM - CANCELLED**

## Planning Commission Meetings:

- **Meeting Days:** Second and Fourth Tuesday of each month
- **Meeting Time:** 7pm
- **Livestream Link:** <http://bit.ly/sebcctv>
- To submit comments before meeting, send an email to [kvanstrom@cityofsebastopol.org](mailto:kvanstrom@cityofsebastopol.org)
- **Next Meeting: [Planning Commission Meeting of November 10, 2020 @ 7:00 PM](#)**

(NOTE: All meetings will be held virtually and are open to the public to attend via web or phone link. Information for meeting attendance can be found here: <https://www.ci.sebastopol.ca.us/Meeting-Event.aspx>)

## Design Review Board Meetings:

- **Meeting Days:** First and Third Wednesday of each month
- **Meeting Time:** 4pm
- **Livestream Link:** <http://bit.ly/sebcctv>
- To submit comments before meeting, send an email to

[amontes@cityofsebastopol.org](mailto:amontes@cityofsebastopol.org)

- **Next Meeting:** [Design Review Board Meeting of November 4, 2020 @ 4:00 PM](#)

**Public Arts Committee Meetings:**

- **Meeting Days:** First Wednesday of each month
- **Meeting Time:** 10:30am
- **Livestream Link:** <http://bit.ly/sebcctv>
- To submit comments before meeting, send an email to [amontes@cityofsebastopol.org](mailto:amontes@cityofsebastopol.org)
- **Next Meeting:** [Public Arts Committee Meeting of November 4, 2020 @ 10:30 AM](#)



---

## SEBASTOPOL BOARDS, COMMISSIONS & COMMITTEES OPENINGS

The City of Sebastopol has the following committee position openings. Please see the links below for details on the positions and how to apply.

### Planning Commission

[Job Notice](#)

[General Application](#)

**Application Deadline: November 19, 2020**

### Design Review Board

[Job Notice](#)

[General Application](#)

**Application Deadline: November 19, 2020**

---

## SERVICE REMINDERS: TAKE THE LEAVES TO THE CART, NOT TO THE CURB

### SERVICE REMINDERS RECORDATORIOS DE SERVICIO

Do not pile leaves from your property on the street. Use your compost cart. Look for your street sweeping schedule at [Recology.com/Sebastopol](http://Recology.com/Sebastopol). Avoid street parking on sweep day. Make sure trees and shrubs don't grow into the roadway.

*No apile hojas de su propiedad en la calle. Utilice su carrito de abono. Busque su horario de barrido de calles en [Recology.com/Sebastopol](http://Recology.com/Sebastopol). Evite el estacionamiento en la calle el día de barrido. Asegúrese de que no crezcan árboles y arbustos en la calzada.*

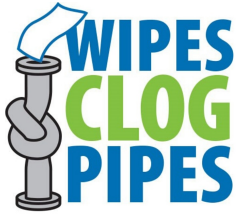


## WATER CONSERVATION

Please continue to practice water conservation as much as possible. California is still technically in a drought, with Sonoma County showing “Moderate Drought” conditions. Click [here](#) for more information.

---

## DON'T FLUSH WIPES!



Flushing wipes, paper towels and similar products down toilets will clog sewers and cause backups and overflows at wastewater treatment facilities, creating an additional public health risk in the midst of the coronavirus pandemic. Please do not flush disinfectant wipes or paper towels down the toilet.

---

## GENERAL INFO

---



**The Sebastopol Center for the Arts has a fantastic fall education program lined up just for you!!**

The classes include Beginning Tap Dancing for Adults and Teens, Drawing Autumn Leaves in Colored Pencil, Nature Journaling, Creative Process in Watercolor, Let's Paint the Wild at the Laguna, Ceramics at Home, and more!

[Adult Classes](#)

[Youth Classes](#)

Some classes start as soon as next week, so check them out and act fast... For full details visit the Sebastopol Center for the Arts website [here](#).

---

## SONOMA COUNTY LIBRARY REVAMPS DIGITAL COLLECTIONS

SONOMA COUNTY LIBRARY

# Digital Collections



More archives • More maps • More images • More data access

*An elegant user experience*  
[digital.sonomalibrary.org](http://digital.sonomalibrary.org)

Interested in local history, culture, art, and archives from the library's special collections? [Sonoma County Digital Collections](http://digital.sonomalibrary.org) is easier than ever to use and enjoy. The updated Digital Collections is growing all the time, so bookmark it and discover new ways to keep exploring!

#### Featuring

- Completely redesigned, user-friendly website
- Searchable photographs and maps from Sonoma County history and culture
- [Archival Collection Guides](#)
- Videos, audio, oral histories
- Local authors
- Community memories
- [Guides to historical research](#)
- [International Wine Research Database](#)
- And much more!

Dive into [Sonoma County Digital Collections](http://digital.sonomalibrary.org) today!

---

**ADD YOUR VOICE TO THE SONOMA COUNTY LIBRARY  
MEMORY ARCHIVE PROJECT**





# SONOMA RESPONDS

## A Community Memory Archive Un Archivo de Memoria Comunitaria

### Tell Your Story

What comes to mind when you think about the past year? Sonoma County Library invites our communities to collectively build the historical record of living through COVID-19, the Black Lives Matter movement, and the impacts on daily life locally. [Sonoma Responds](#) is an English/Spanish online portal where you can preserve your stories through a variety of media.

### Ways to Share

- Post on social media using #SonomaResponds
- Respond to reflective prompts online
- Upload images, videos, recordings, writings
- Nominate online content for a web archive
- Nominate material for the physical archive

Your submissions will be the primary sources that future generations use to understand the age of social distancing. These stories will live in the library's [Digital Collections](#) and with its online partners such as the Online Archive of California, Calisphere, and the Internet Archive.

---

## EDUCATION RESOURCES

---

### SUPERVISED DISTANCE LEARNING PROGRAM WITH THE SEBASTOPOL CENTER FOR THE ARTS

The Sebastopol Center for the Arts is offering supervised distance learning for families needing daytime help for children Grades 1-5.

The program offers:

- A safe, supervised environment for schoolchildren grades 1-5
- Small groups of 10-12 children who are staying in the same group for 6 weeks
- Supervision of the children by experienced educators who actively support the children during the zoom classes offered by their school

- An ideal environment for children who do not perform well at home due to lack of assistance or supervision
- A place for the children to interact with peers and continue to have a social life during Covid
- Outdoor activities together
- After school program of art classes taught by experienced artists in their field: music, dance, arts and crafts and more

**Only 20 spots left!**

If you know of a family or child that could use this help, write as soon as possible to Dana Swint, Education Manager at [edumanager@sebarts.org](mailto:edumanager@sebarts.org).

First priority goes to Sebastopol Union School District students, but invite anyone interested to contact us. Scholarships and sliding scale fees available.

Click [here](#) for more information.



**SEBASTOPOL CENTER FOR THE ARTS**

**PRESENTS**  
SUPERVISED DISTANCE LEARNING PROGRAMS  
WELCOMING ALL CHILDREN GRADES 1-5

**PRESENTA**  
PROGRAMAS EDUCATIVOS SUPERVISADOS CON DISTANCIAS SEGURAS  
PARA NIÑOS DE LOS GRADOS 1 – 5

A SAFE supervised space for your child's daily schooling during the pandemic with after school art enrichment. We'll keep your child on track academically and socially, while you're at work.

Ofrecemos un espacio seguro y supervisado para actividades académicas con enriquecimiento artístico después del colegio para que sus hijos se mantengan al tanto socialmente como académicamente mientras Ud. trabaja durante la pandemia.

**SCHOLARSHIPS AVAILABLE**  
Contact Dana Swint at [edumanager@sebarts.org](mailto:edumanager@sebarts.org), (707) 829-4797 x 1009 to learn more. Only 46 spots available.

## BORROW MORE MATERIALS FROM MORE LIBRARIES WITH YOUR LIBRARY CARD



*Borrow more materials from more libraries with your library card*



### Access More Than 9 Million Titles from Other Libraries

Can't find what you're looking for in the library collection? Try [LINK+](#), a free resource sharing service which allows you access to more than nine million titles from over 70 participating libraries in California and Nevada. All you have to do is [search](#) for and select your item, choose Sonoma County from the list of libraries, and select your preferred [curbside pickup](#) location. Books, DVDs, music CDs, audiobooks, and more may be borrowed from participating libraries.

Great precautions are being taken with deliveries outside the system—LINK+ materials are quarantined for seven days before they are moved on to you, just like book drop returns. Up to three LINK+ holds may be placed at a time. Explore a new world of books and media today with [LINK+](#)!

# SCHOOL RESOURCES FROM SONOMA COUNTY LIBRARY

## School Resources

## Recursos Escolares

### Online Library 24/7

### Biblioteca Virtual 24/7



Learn a Language  
Aprende un idioma



Learning Express



BookFlix



Streaming Media

Transmisión de películas y más



Study Help

Ayuda con las tareas



StudentOne Card



Lynda.com



OverDrive



Libby



sonomalibrary.org

This is a challenging time for our community, and Sonoma County Library is here to help with your back-to-school needs. Are you a parent of a school-age child or children? A student yourself? Maybe you want to enrich your self-learning. We've put together a list of resources that you may find useful during the school year...and beyond!

- Access educational [eBooks, and eAudiobooks, stream movies and more](#). This includes always-available eBooks and eAudiobooks such as [Diverse Reads for Teens](#) and [Diverse Reads for Kids](#) on OverDrive.
- Students of any age can connect with free tutors and more at [Tutor.com](#).
- Our Student OneCard partnership provides students access to library resources using their student ID number. [See the list of participating schools and learn more about Student OneCards](#).
- Earn your high school diploma online with [Career Online High School](#).
- Learn at home with our [Great Courses collection](#) on OverDrive. Explore 200 expertly-produced audio and video courses by professors such as Neil DeGrasse Tyson!
- Your library card gives you access to [Lynda.com](#), an online learning service that teaches business, technology, and creative skills through video tutorials.
- [LearningExpress Library](#) features nearly 1,000 online tutorials, practice tests, and eBooks for all ages.
- Why not use this time to learn a new language or brush up on one you're already familiar with? [Mango Languages](#) is fun and easy to use.

Still hungry for more? Your online library never closes. [View More eResources](#)

## ONLINE EDUCATION RESOURCES

See the [Sonoma County Office of Education](#) website for news and information about Sonoma County schools.

The [PBS LearningMedia](#) website has several free online resources including standards-aligned videos, interactives, lesson plans, and more. The website also includes [PreK-12 Resources for Emergency Closings](#) that include activities, lesson plans, and videos organized by grade and

subject area.



Contact  
Us



7120 Bodega Avenue, Sebastopol, CA 95472

707-823-1153

[www.CityofSebastopol.org](http://www.CityofSebastopol.org)