



City of Sebastopol Community Newsletter

www.CityofSebastopol.org

October 2 - October 8 Special Weekly Edition of Sebastopol Community Newsletter

Please visit the City of Sebastopol website at www.CityOfSebastopol.org for the most up-to-date local information on the coronavirus crisis. There is a page dedicated entirely to the crisis, the [Novel Coronavirus \(COVID-19\) Resource Page](#), where you will find specific resources and answers to many questions that you may have. The City of Sebastopol is also on [Facebook](#), [Twitter](#), and [NextDoor](#).

[View as Webpage](#)

KNOW SOMEONE INTERESTED IN RECEIVING THIS NEWSLETTER? FORWARD THIS EMAIL.

WAS THIS EMAIL FORWARDED TO YOU BY SOMEONE ELSE?

[Click Here To
Subscribe](#)



PROTECT YOUR FAMILY AND COMMUNITY FROM COVID-19.



Cover



Wash



Remove



Shower



Clean

covid19.ca.gov

HAVE YOUR GO BAGS READY!

Are you prepared to evacuate if necessary? Are your go bags ready?

Even though Sebastopol hasn't been under any evacuation orders or warnings during the current Glass Fire Incident, all citizens should be prepared to evacuate in the event one becomes necessary.

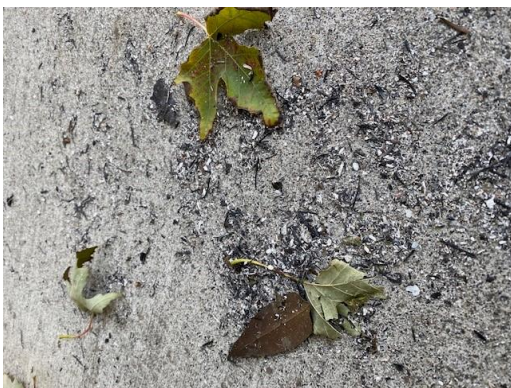
Everyone in your family should have their own Go Bag that contains a minimum of 72 hours worth of essential supplies. Personalize kits and keep them where they can easily be reached—at home, in the car, at work or school.



This is particularly important during fire season when a quick getaway may be needed. A backpack or other small bag is best for these kits so that they can be easily carried in an evacuation. During the COVID-19 pandemic additional considerations for your Go Bag include cloth face coverings, hand sanitizer, anti-bacterial wipes, and a thermometer.

[Build A Personal Go Bag](#)

FIRE ASH & DEBRIS



The local fires have resulted in large volumes of fire ash and debris throughout Sonoma County. Please use caution when you come in contact and clean up these materials.

The City of Sebastopol has scheduled additional street sweeping for the downtown and commercial areas this week with our street sweeping provider Recology to mitigate the ash and debris.

According to the California Department of Health and Human Services, ash deposited by forest fires is relatively nontoxic and similar to ash found in fireplaces, however, any ash particularly from ash and debris found inside burned structures will contain small amounts of cancer-causing chemicals or carcinogens. It's important to note that ash may be irritating to the skin (especially to those with sensitive skin) and if breathed could irritate the nose and throat causing coughing and even trigger asthmatic attacks in people who have asthma.

In an effort to avoid possible health problems the California Environmental Protection Agency has developed a list of recommended steps to follow when cleaning up after a fire:

- Do not allow children to play in ash.
- Wash ash off children's toys before children play with them.
- Clean ash off house pets.
- Wear gloves, long sleeved shirts and long pants and avoid skin contact.
- If you do get ash on your skin, wash it off as soon as possible.
- If you have a vegetable garden or fruit trees, wash the fruit or vegetables thoroughly before eating them.
- Avoid getting ash in the air as much as possible. Do not use leaf blowers or take other actions that will put ash in the air.
- Gentle sweeping of indoor and outdoor hard surfaces followed by wet mopping is the best procedure in most cases. A damp cloth or wet mop may be all that is needed on lightly dusted areas.
- Use a HEPA-filter vacuum cleaner. Shop vacuums and other common vacuum cleaners do not filter out small particles, but rather blow such particles at the exhaust into the air where they can be breathed.

- Wear a well-fitted dust mask for protection during cleanup. A mask rated N-95 or P-100 will be more effective than simpler dust or surgical masks in blocking particles from ash. In general, many ash particles are larger than those found in smoke; thus, wearing a dust mask can significantly reduce (but not completely eliminate) the amount of particles inhaled.
- Persons with heart or lung disease should consult their physician before using a mask during post-fire cleanup.
- Avoid washing ash into storm drains whenever possible.
- Collected ash may be disposed of in the regular trash. Ash may be stored in plastic bags or other containers that will prevent it from being disturbed.
- If ash is wet down, use as little water as possible.

Check out the [Protect Yourself from Ash Worksheet](#) for more information.

APPLY NOW FOR THE SONOMA COUNTY SMALL BUSINESS STABILIZATION GRANT PROGRAM

On Tuesday, September 1, 2020, the Sonoma County Board of Supervisors approved the allocation of \$2.5 million dollars from federal CARES Act funding received by the County to put towards a local Business Stabilization Grant Program.

In partnership with Working Solutions, a Bay Area CDFI, **small businesses in Sonoma County with between 1 and 30 employees will be able to apply for grants of \$2,500 to \$15,000 in Covid-19 relief funding** to use towards expenses including payroll, utilities, rent or mortgage expenses.



The **grant application window is NOW OPEN** and small business owners should be prepared to apply with the following necessary documents:

- Copy of Business License OR Copy of Utility Bill in Business' Name
- Total pre-Covid-19 Employment Figures
- Annual Business Income

CLICK [HERE](#) TO APPLY

The **application window closes Monday October 18th, at 11:59pm**, and recipients will be notified by the end of October.

APPLICATION ASSISTANCE CENTERS have been established to assist business owners with questions about the application process or those who may need internet access to complete the online application.

- Guerneville – Russian River Chamber of Commerce, 16200 First St.
- Santa Rosa – Latinx The Hub, 2466 Bennett Valley Rd. Ste B314
- Sonoma – La Luz Center, 17560 Greger St.

NOMINATE A LOCAL WHO MAKES A DIFFERENCE

Do you know a Sebastopol local who makes a difference in the community? The Locals Who Make a Difference (LWMAD) program recognizes and acknowledges Sebastopol community members for their contributions in helping to make Sebastopol a better place to live. Nominations for the next LWMAD honoree will close on **November 1**. To nominate someone from the Sebastopol community, learn about past honorees or the program, visit the [Locals](#)

[Who Make a Difference](#) section of the City website.



TAKE THE MAYOR'S CHALLENGE AND VOTE!

Check out the video [here](#).

FALL IS HERE AND THE LAGUNA SUMMER BRIDGE HAS BEEN REMOVED

With the arrival of fall the Laguna pedestrian bridge has been removed for the season. Look for its return in the spring!

While the Summer Bridge is down, the Laguna may still be accessed via entrances at 6303 Highway 12, just east of the city limits and 5420 Occidental Rd.

See the Trail Map [here](#).



HONEYBEE HABITAT HIDES IN PLAIN SIGHT IN LAGUNA

See anything unusual in this tree?



Look more closely.



Did you know that there's a secret honeybee habitat in the Laguna Wetland Preserve? With the approval of the City of Sebastopol (which is responsible for the maintenance of the Laguna Preserve trails), this log hive was constructed and placed in the Laguna in 2016 by the Village Building Convergence (VBC) group under the mentorship of local bee guru Michael Joshin Thiele. Honeybees, like many pollinators crucial to ecosystem preservation (including 8 species of bees which are on the endangered species list), are under stress. Thiele's premise is that tree-based log hives and hives in living trees are effective ways to support the overall health of the species. Honey is not harvested from these hives. Rather, they are a part of what Thiele calls "re-wilding."

The log hive has quietly done its work over the past four years. After the departure of the VBC, and the retirement of former Planning Director Kenyon Webster, the hive fell off the radar and hadn't had the annual maintenance necessary for maximum benefit. Thiele brought the hive to the attention of current Planning Director Kari Svanstrom and volunteered to undertake its maintenance in late September.

The next time you're hiking through the laguna, see if you can spot this high-flying safe harbor for honeybees.

See how log hives are made [here](#).

Learn about "re-wilding" honeybees [here](#).

Find out more about the Laguna de Santa Rosa Wetlands Preserve [here](#).

ANNUAL SEWAGE OVERFLOW TRAINING



Last week Sebastopol Public Works department underwent its annual specialized training in best practices for containing sewage overflow. There's a lot more to this process than you might expect. Crew members need to be able to accurately estimate spill volume and area and choose the right containment method in order to prevent overflow damages.

COVID-19 & HEALTH UPDATES

OUTDOOR PLAYGROUNDS CAN REOPEN WITH COVID-19 RESTRICTIONS

The California Department of Public Health announced that outdoor playgrounds and other outdoor recreational facilities can reopen. Visitors to outdoor community playgrounds must comply with the following requirements:

- Face masks over the mouth and nose are required for everyone 2 years of age or older with caregiver supervision at all times to ensure face mask use.
- Do not use the playground when different households are unable to maintain a physical distance of 6 feet or when the capacity limit has been reached.
- Caregivers must monitor to keep adults and children from different households at least 6 feet apart.
- Consider coming on different times or days to avoid wait times and potential crowded times.
- No eating or drinking in playground, to ensure face masks are worn at all times.
- Wash or sanitize hands before and after using the playground.
- Elderly and persons with underlying medical conditions should avoid playground when others are present.
- Limit visit to 30 minutes per day when others are present.



[Learn more, about the state's guidelines for outdoor playgrounds.](#)

CURRENT STATE TIER ASSIGNMENT FOR SONOMA COUNTY: PURPLE

Based on this week's numbers, Sonoma County remains in the purple tier of California's Blueprint for a Safer Economy. This is the most restrictive level and is based on two main metrics — new daily cases per 100,000 and test positivity rate.

We have an adjusted new case rate of 10.8. This is beyond the benchmark of 7, which is what is required to move us into a less restrictive tier. We have a test positivity rate of 5.0%, which is below the benchmark of 8.0% to move us into the next tier. However, both criteria must be met for two weeks before we can progress to less restricted activities.

Current status and information about tiers and allowable activities can be found at [California's Blueprint for a Safer Economy](#).

COUNTY ISSUES AMENDMENT TO HEALTH ORDER



On September 23 Sonoma County issued *Amendment No. 1* to Health Order C19-15, which was originally issued in June. The amendment aligns the local order with [California's Blueprint for a Safer Economy](#)

For now, the alignment makes only minor changes, such as allowing childcare cohorts to increase from 12 to 16 students. As the county progresses through each tier, [state guidelines](#) will dictate how and when businesses and activities are allowed.

It's important to remember that this should not be seen as a return to normal. The virus is still not contained and continues to present a clear and present danger to the community. This is especially true of socializing and/or working indoors with non-household members. We remain particularly concerned with those most at-risk for serious health consequences and how the activities of those at lower risk can impact the most vulnerable.

FOCUSING ON EQUITY IN CALIFORNIA'S TIERED SYSTEM

The state is introducing a new health equity measure that will factor into tier placement. To be allowed to move or remain in less restrictive tiers, counties must reduce disparities in testing positivity between the most and least socioeconomically advantaged regions of the community, as ranked by the Healthy Places Index. The measure also ensures that counties provide culturally competent and linguistically congruent measures, including contact tracing and wrap around services for isolation/quarantine. The state of California assures us that more detailed information on this measure will soon be released.

SCHOOL WAIVERS UPDATE

When schools, public or private, are able to reopen for in-person instruction is determined not by the county Health Officer but by where Sonoma County stands in its efforts to slow the spread of COVID-19.

The state Department of Public Health is working closely with the Sonoma County Office of Education to determine guidelines for specialized in-person instruction.

Although we remain in the state's purple tier, recent improvements in our latest case rates mean that we can now consider waiver applications from schools for in-person learning under specific conditions.

For example, schools must submit comprehensive plans to address a spectrum of safety topics. Each school also must consult with their staff, parents, and community

organizations about how to address critical concerns, such as doing their own surveillance testing and contact tracing if there is a COVID-positive student or staff member. Some of the other key areas that require detailed plans as outlined by the California Department of Public Health include:

- The regular cleaning and disinfecting of classrooms and facilities.
- The flow of individuals through entrances and exits, and all other movement within the school.
- Mandates about face coverings and other essential gear.
- Healthy hygiene practices.
- Physical and social distancing.
- Staff training and family education.
- Triggers for switching to distance learning if a class or the school must quarantine.
- And communication plans for parents and staff.

The state of California is urging schools to focus on providing specialized, targeted services for English learners, students with disabilities, students requiring access to the internet and devices for online learning. The state is also asking for plans for those who are most at-risk and have the highest need including students experiencing homelessness, neglect, or abuse.

Doctor Mase is currently reviewing the waivers submitted to the County and anticipates having more information available at the end of this week.

We all are concerned about the impacts of the COVID-19 pandemic on education and are eager to see our children back in classrooms. It's up to all of us to slow the spread enough that students can be back in classrooms - and stay in class.

SHOULD YOU GET A FLU VACCINE?

As the flu season approaches, health experts are concerned that adding another respiratory illness to the healthcare system during the COVID-19 pandemic could overburden providers and facilities. Getting the flu vaccine can help keep you and your loved ones healthy, while helping conserve local healthcare resources.



The CDC recommends that all people 6 months and older get a flu vaccine every year, and we know it's especially important this year. Getting vaccinated now, before influenza is widespread in the community, can help ensure you are protected.

Though the flu vaccination is not 100% effective in stopping a person from getting the flu, a vaccine can make flu symptoms less severe. As we deal with this pandemic, having milder symptoms will help reduce hospitalization rates. Additionally, if fewer people have flu-like symptoms there will be more testing capacity for those who experience fevers, chills, and respiratory issues associated with both conditions. Finally, because it is possible for people to have COVID-19 and the flu simultaneously, patients can save themselves the discomfort and possible serious consequences of having both viruses in their systems at the same time.

SONOMA COUNTY COVID-19 CASE DATA

Click [here](#) to view Sonoma County's COVID-19 case data.

SONOMA COUNTY COVID-19 TESTING INFORMATION

Click [here](#) to view Sonoma County's COVID-19 testing information.

REUSABLE BAGS ARE NOW ALLOWED IN GROCERY STORES AND RETAIL ESTABLISHMENTS

COVID -19 BAG USE

USO DE LA BOLSA REUTILIZABLE DURANTE COVID -19

CUSTOMERS SHOULD LEAVE REUSABLE BAGS IN THE SHOPPING CART WHEN CHECKING OUT.

LOS CLIENTES DEBEN DEJAR LAS BOLSAS REUTILIZABLES EN EL CARRITO DE COMPRAS AL MOMENTO DE HACER SU PAGO.



CUSTOMERS SHOULD NOT PUT REUSABLE BAGS ON THE CHECKOUT CONVEYOR BELT.

LOS CLIENTES NO DEBEN PONER LAS BOLSAS REUTILIZABLES EN LA BANDA TRANSPORTADORA QUE ESTÁ EN LA CAJA DE PAGO.



CUSTOMERS MUST BAG THEIR OWN PURCHASES.

LOS CLIENTES DEBEN PONER LAS COMPRAS DE MERCADO EN SUS BOLSAS REUTILIZABLES ELLOS MISMOS.



STORES MAY PROVIDE A REUSABLE BAG OR RECYCLED PAPER BAG TO CUSTOMERS FOR A MINIMUM 10¢ CHARGE.

LAS TIENDAS PUEDEN PROPORCIONAR UNA BOLSA REUTILIZABLE O BOLSA DE PAPEL REICLADO A LOS CLIENTES POR UN CARGO MINIMO DE .10 CENTAVOS.



[ZEROWASTESONOMA.GOV/CARRYOUTBAGS](https://zerowastesonoma.gov/carryoutbags) ECO-DESK 565.3375



SONOMA COUNTY WASTE MANAGEMENT AGENCY (ZERO WASTE SONOMA)
WASTE REDUCTION PROGRAM FOR CARRYOUT BAGS ORDINANCE 2014-2

LA AGENCIA SONOMA COUNTY WASTE MANAGEMENT (ZERO WASTE SONOMA) PROGRAMA DE REDUCCIÓN DE RESIDUOS PARA LA ORDENANZA 2014-2 DE BOLSAS PLÁSTICAS DESECHABLES



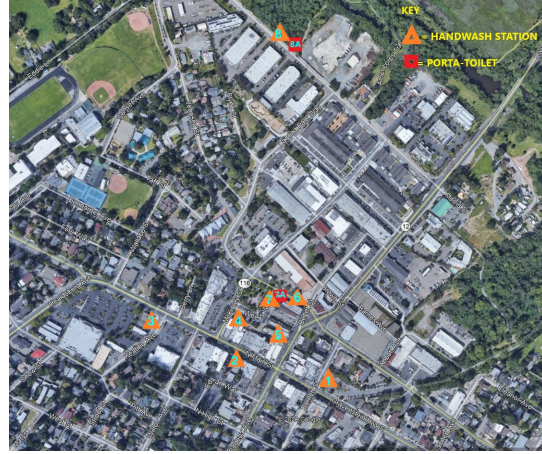
JUNE, 2020

HANDWASHING STATION LOCATIONS IN DOWNTOWN SEBASTOPOL

In an early response to help make our community safer during the COVID-19

epidemic, the City of Sebastopol set up a number of handwashing stations throughout the downtown area in mid-March.

In the meantime, we've added more locations and re-located some of the stations to be more convenient, including new portable restrooms and handwash facilities on Morris Street for homeless support services.



Current locations are:

- 1) City Parking Lot at Main St. and Burnett
- 2) North Main St., mid-block (south side of street between Bodega and Wilton)
- 3) 328 N. Main Street - On sidewalk entrance Community Bank parking lot
- 4) Adjacent to southwest corner of Town Plaza parking lot against rear wall of Silk Moon
- 5) Sebastopol Ave. (Route 12) at alley between Ramen Gaijin and WestAmerica Bank
- 6) 6902 Sebastopol Ave - Screamin' Mimi's Ice Cream- at side window on Petaluma Ave
- 7) & 7A) Outside public restrooms on east side of Town Plaza. There are also portable toilets at this location.
- 8) & 8A) Morris St. north of Laguna Park Way, northeast side of street. There are also portable toilets at this location



WEAR A MASK.

Slow the spread.

covid19.ca.gov



Coronavirus spreads when an infected person speaks, sneezes, or coughs within 6 feet of others. You may have the virus and spread it even if you feel well.

To prevent infection, you must cover your nose and mouth when outside your home. So wearing a mask is now required statewide. Wearing a mask or cloth face covering can slow the spread of COVID-19 by limiting the release of virus into the air. It also reinforces physical distancing, and shows you care about the health of others.

Don't wear your mask under your nose or just on your chin. A mask is only effective if it covers both ways you breathe.

Who needs a mask?

- Anyone going outside their home
- Workers in customer-facing industries
- Workers in offices, factories, or any group setting
- Doctors, nurses, and other health care professionals
- Other workers, as dictated by [industry guidance](#)

Who shouldn't wear a mask?

- Children under 2 years old
- Anyone with respiratory issues where it would impede their breathing

- Anyone unable to remove the mask without help
- Anyone with a medical condition, mental health condition, or disability that does not allow them to wear a mask

See a [complete list](#) of who should not wear a mask.

When should you wear a mask?

You should wear a mask or face covering whenever you'll be around someone you don't live with, including:

- In any indoor public space
- When waiting in line
- When getting health care
- On public transportation or when ride-sharing
- At work, when near others or moving through common areas
- Outdoors, if you can't stay 6 feet away from others

When can you take off your mask?

There are times when it's okay to take your mask off when you're away from home, such as:

- When eating or drinking
- If a hearing-impaired person needs to read your lips
- If wearing a face covering imposes a risk to you at work – for example, if it could get caught in machinery
- When you're not sharing a common area, room or enclosed space with others
- When you are getting a service to the nose or face
- When outdoors in public and can stay six feet from others

You should replace the mask as soon as you can after these activities to reduce the risk of infection.

For more information visit <https://covid19.ca.gov/masks-and-ppe/>

NEED HELP WITH ESSENTIAL RESOURCES?

Visit the [2-1-1 Free Referral Service](#) website if you have questions or needs.

For additional assistance, resources, and help with essential needs, see the [SoCo Emergency](#) resources webpage.

ESSENTIAL SERVICES WILL CONTINUE:

- **The City of Sebastopol will not turn off water due to nonpayment.** The City recognizes the hardship that the pandemic and resulting Shelter in Place Orders, have created in our community, and will temporarily suspend non-emergency turnoffs and late fees.
- **PG&E will not cut off power due to nonpayment.** PG&E voluntarily implemented a moratorium on service disconnections for non-payment, effective immediately. This suspension will apply to both residential and commercial customers and will remain in effect until further notice.
- **Recology will not suspend trash service due to nonpayment.** Recology understands that customers are starting to request delay of payments or payment plans due to the circumstances, and they are sensitive to what the community is going through. Recology will not stop service due to non-payment at this time.

Click [here](#) for more information on Essential Services during the COVID-19 Pandemic.

WEEKLY COVID-19 VIDEO UPDATES

See the City's [Coronavirus \(COVID-19\) Resource Page](#) for recent City, County, and State video updates.

THE SONOMA COUNTY AREA AGENCY ON AGING REQUESTS PUBLIC PARTICIPATION IN THE OLDER ADULT NEEDS ASSESSMENT SURVEY

Please participate in a Needs Assessment Survey developed by Supervisor Zane's Older Adult Taskforce in partnership with Dr. Mase and non-profit leadership. Isolation presents its own health risk for older adults and responses to this Needs Assessment will help the County of Sonoma improve the health and quality of life for older adults.



Creating Safe Social Spaces is a key part of the Older Adult Taskforce. Dr. Mase has authorized that if following the guidelines below, Safe Social Spaces are allowed and encouraged at independent living communities, low income senior housing properties, senior centers etc. The taskforce is developing additional messaging materials.

- Signage to support physical distancing;
- Wear Your Masks;
- Hand Washing;
- Hand Washing Stations;
- Outside Spaces are better than Inside;
- Groups of 10 or less, following these guidelines, are acceptable.

[Needs Assessment Survey - English](#)
[Needs Assessment Survey - En Español](#)

WARM LINE FOR EMOTIONAL & MENTAL HEALTH SUPPORT



WARM LINE FOR EMOTIONAL & MENTAL HEALTH SUPPORT

The last few months have been very difficult for everyone in our community. You may be feeling stressed, isolated, depressed, and anxious. You do not need to suffer alone. Help is available.

**Please call the Sonoma County Warm Line
for Emotional and Mental Health Support:**

(707) 565-2652

Or visit SoCoEmergency.org

This free and private warm line is available seven days a week from 10 a.m. - 7 p.m. Telephone interpretation for other languages is available.



CREDIBLE SOURCES FOR COVID-19 UPDATES

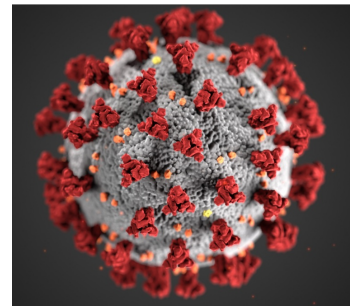
[California Department of Public Health](#)

[County of Sonoma Department of Health Services](#)

[SoCo Emergency Page](#)

[Centers for Disease Control and Prevention \(CDC\)](#)

[World Health Organization \(WHO\)](#)



LEGAL AID'S DISASTER TEAM IS HERE TO HELP PEOPLE IMPACTED BY COVID-19

If you have employment questions, benefits questions, or any other legal issues related to the pandemic, please contact Legal Aid of Sonoma County.

Legal Aid of Sonoma County

Disaster Relief Team

The Disaster Relief Team has assisted hundreds of survivors with their recovery.

We assist disaster survivors with:

- ❖ Disaster Unemployment Insurance
- ❖ EDD Appeals
- ❖ Price Gouging
- ❖ FEMA Benefits
- ❖ Information and Referrals
- ❖ Other legal issues resulting from a disaster or declared emergency, including COVID-19

Contact us for a free, confidential appointment with our Disaster Relief Team to discuss your legal rights or navigate the recovery process.

Contact Us:

Legal Aid Disaster Relief COVID-19
Response Hotline
(559) 429-6974

Para asistencia en español, por favor llame al (707) 542-1290.



Legal Aid's mission is to promote social justice and advance basic human rights for vulnerable people in our community.

Our Team:

Kendall Jarvis, JD, LMN
Disaster Relief Attorney
kjarvis@legalaidsc.com

Kristopher Lopez, JD
Disaster Relief Attorney
klopez@legalaidsc.com

Tomás González
Disaster Relief Caseworker
tgonzalez@legalaidsc.com

FIRE SAFETY & PREPAREDNESS

Thank you firefighters and first responders!



FIRE UPDATES

As of October 9th at 7am, the **Glass Incident** is 67,484 acres and 70% contained.

- Destruction:
 - Sonoma County Single-family Residences Destroyed: 332
 - Sonoma County Total Number of Structures Damaged/Destroyed: 763
 - Includes single-family, multi-unit, commercial, mixed-residential, outbuildings, and infrastructure.
 - The estimated damage assessment for structures destroyed and damaged in Sonoma and Napa counties is \$255,039,582.

While the fire is not currently a threat to Sebastopol; all citizens should continue to be alert and continue fire season preparations.

These are the best resources for up-to-the-minute information on the fires in our area:

SoCoEmergency.org

[Fire Incident and Evacuation Map](#)

Note: this map may load slowly or need to be re-loaded due to increased volume on website.

During active fire events, please help us keep our police and fire personnel available for the most serious emergencies. Contact emergency services by calling 9-1-1 only when human life or property are in immediate danger.



UNHEALTHY AIR QUALITY

SoCoEmergency.org

Unhealthy Air Quality

Protect yourself from poor air quality from California wildfires:

- Limit time outside
- Close the windows
- Use fans or air-conditioning with re-circulated air when possible
- Stay hydrated

**Check your local air quality at
www.airnow.gov**

SIGN UP FOR ALERTS

Make sure that you have signed up for:

[SoCoAlerts](#); and

Nixle Alerts (either [online](#) or by texting your zip code to 888777)

It is important to register for both types of alerts. If you receive Nixle alerts, read them thoroughly and click on any links.

Text Fire or Fuego (for Spanish) to 211-211 for updates.

More information on alerts may be found [here](#).

KNOW YOUR ALERTS

The City of Sebastopol uses multiple notifications and warning systems to make sure emergency alerts are delivered to the people who need the information.



Emergency Alert System (EAS) - No Registration Required

National public warning system that will interrupt local broadcast tv and radio programming to provide an alert in the event of a large-scale emergency.



Wireless Emergency Alerts (WEA) - No Registration Required

Urgent alerts sent as text-like messages to your mobile phone based on your location (you will only receive notification if you are in the area of the emergency). WEAs have three alert categories– Imminent Threat, AMBER, Presidential. You must keep the factory settings on to your WEA- capable phone to receive a WEA.



SoCoAlert - Registration Required

Emergency notification service providing Sonoma County first responders the ability to alert residents by landline or mobile phone, text message and email about imminent threats to life and property in specific impacted areas. Register all addresses that you'd like to receive alerts for (work, child's school, etc.). You don't have to be in the location of the emergency to receive alert.

Must register at SoCoAlert.com OR call (866) 939-0911, press "0" at the menu, ask operator for assistance with registering for SoCoAlert.



Nixle - Registration Required

Community information service managed by Sonoma County Fire District and Sonoma County Sheriff's Office. Community messages are sent to email, and for critical emergencies, Alert messages are sent via text message and email (notifications are NOT delivered by phone call). Customize your settings at nixle.com to control which types of notifications you receive. Must register at nixle.com or text your zip code to 888-777



Local Radio and Television

Local news broadcasters to provide updates during an emergency. Tune radio to 1350 AM, 103.5 FM, 100.1 FM, 89.1 FM (bilingual), 98.7 FM (Spanish); watch preferred local TV news channel.



Hi/Lo Sirens

Sebastopol police cars and fire department vehicles are outfitted with new Hi/Lo sirens, a different sound than traditional sirens. This European-style, 2-tone siren will only be used in an emergency to alert residents within specific areas of the need to evacuate.

Other Ways to Stay Informed

Sebastopol Police Dept. 
Sebastopol Fire Dept. 
City of Sebastopol  



More information on emergency alerts and notifications at SoCoEmergency.org

Thank you to the City of Santa Rosa for sharing their graphics.

**FOR NON-EMERGENCY SUPPORT
FOR FIRES IN SONOMA COUNTY
DIAL 2-1-1 OR TEXT "FIRE" TO 211-211**

**PARA AYUDA CON LOS INCENDIOS EN EL CONDADO
DE SONOMA QUE NO SEA DE EMERGENCIA,
MARQUE 2-1-1 O MANDE UN MENSAJE DE TEXTO
CON LA PALABRA "FUEGO" AL 211-211.**

FREE + AVAILABLE 24/7 GRATIS + DISPONIBLE 24/7



Get Connected. Get Help.™



POWERED BY: United Way of the Wine Country

WILDFIRE IS COMING. ARE YOU READY?

As we have all seen with recent events, fire season is upon us. While Sebastopol did not come under an evacuation warning or order, we must continue to prepare.

All citizens are urged to step up your emergency planning for wildfires, including maintaining defensible space around the home, having an emergency plan in place, preparing a "go-bag" (including masks, gloves, and sanitizer), evacuating if ordered, and knowing several routes out of town. See the links below for more information and resources.

[Homeowners Checklist: How to Make Your Home Fire Safe](#)
[Ready, Set, Go! Your Personal Wildfire Action Plan](#)
[Defensible Space and Hardening Your Home](#)
[Download and Complete your Personal Emergency Plan](#)
[Resources for Access & Functional Needs Populations](#)

Visit readyforwildfire.org for quick information on fire preparedness and what to pack in the event of an evacuation. COVID-19 precautions still apply, so be sure to include masks, gloves, and sanitizer in your [go-bag](#). Review the [Evacuation Plan Checklist](#) and the [Be Ready: Evacuation Timeline](#) to help you prepare.

The Sebastopol Fire Department has confirmed that there is no evacuation "Zone Number" for Sebastopol City Limits. In the event of an evacuation warning or order, it will say "City of Sebastopol" or "Sebastopol City Limits." Unincorporated Sebastopol is Zone 4. [Zone Map](#).

[Here is the current map](#) showing “Planned Evacuation Zones” in and around Sebastopol. This may change.

Governor Newsom also reassured citizens that, in the case of evacuation, planning is in place for emergency shelters that will operate under COVID-19 social distancing guidelines.

BUSINESS NEWS

BUSINESS LICENSE APPLICATIONS AND RENEWALS



We’re moving to a completely paperless system for business license applications and renewals. Renewal notices will be sent electronically to the email info we have on file. Make sure your contact information is updated. You can check and update your information at our renewals portal [here](#). We’re also upgrading our online business directory to allow you to make it easier for your customers to find your business. Make sure that your business information is up to date by visiting the online portal [here](#) where you can also apply for a business license. Please make sure to fill out all applicable fields. Give us a call at **(707) 823-7863** with any questions.

UPDATED FACADE IMPROVEMENT GRANT PROGRAM

The City of Sebastopol has updated the Façade Improvement Program. The updates include more business types that are eligible for the program and an increase in the percentage of improvement costs that may be reimbursed by the city. A property owner or tenant may now be reimbursed for **75% of new improvements up to \$2,500**. Previously the program reimbursed for 50% of new improvements.



There is the potential for additional changes to the program that will further relax requirements. **Applicants are urged to apply as soon as possible as the submission deadline for the next round of the program is October 20**. While the deadlines for future rounds in the current fiscal year are scheduled for January 19 and April 19, 2021, funding is limited based on the adopted City Budget. Funding may be entirely allotted in early rounds.

This program is aimed at encouraging local businesses and business property owners to improve commercial and industrial buildings. Upgrades, maintenance, and aesthetic enhancements will benefit the entire community and enhance the local economy.

With these objectives in mind, subject to funding availability, the Sebastopol Façade Improvement Program will provide a rebate for expenses incurred on new exterior property improvements made to commercial or industrial buildings within the City of Sebastopol.

Eligible improvements include painting, new signage, awnings, landscaping, exterior lighting, and local permit fees. Façade building improvements (new windows, changing

materials, etc.) are also eligible; however, please note that larger changes may require Design Review approval as well.

The objective of the Façade Improvement Program is to provide an incentive to property owners and/or tenants to enhance the physical appearance of buildings and landscapes. This public/private partnership investment is intended to leverage private capital with public funds for greater community economic benefit.

Click [here](#) for more information on the program and how to apply.

OPEN BUSINESSES



Be sure to contact them first as this information may change from day to day.

[Sonoma West Times & News](#) list of open businesses

[Sebastopol Chamber of Commerce](#) list of open businesses

[Press Democrat](#) list of open businesses

Designated as an essential business, the Sunday Farmer's Market on the Plaza is currently open and taking safety precautions and practicing social distancing. Check their [website](#) for more information.

The City of Sebastopol has compiled a [list](#) of open essential businesses. If your business supplies essential services, please email business@CityOfSebastopol.org with details such as offerings, days/hours and any special services like online ordering, takeout, delivery, curbside pickup, and special hours for seniors, at-risk, or first responders.

When visiting local businesses for essential needs, please wear a facial covering and maintain social distance (at least 6 feet between you and anyone outside your household).

SEBASTOPOL CURB SIDE DELIVERY LOCATIONS

The city currently has three curbside pickup locations for businesses in Downtown Sebastopol.

Locations:

150 N. Main Street

162 N. Main Street

124 S. Main Street

The city is in the process of providing additional curbside delivery locations in an effort to help our local businesses. If your business will have curbside delivery please call **707-823-6167** or email business@cityofsebastopol.org with this information as this information will help guide the City to locations that will be set aside.



CITY NEWS

REGULAR CITY BUSINESS CONTINUES

[Administrative Services:](#)

- Administrative Service staff are available by phone or email for questions. Please email customerservice@cityofsebastopol.org; or call **707-823-7863** and leave a message and someone will respond to you.

Building Department:

- The Building Department is open and operating regular office hours - Monday - Thursday 7am to 5:30pm, Closed 12pm to 12:30pm.
- The Building Department is located inside the Fire Station.

City Manager's Office:

- City Hall is closed, but staff are available by phone or email for questions. Please email info@cityofsebastopol.org; or call **707-823-1153** and leave a message and someone will respond to you.
- City staff encourage the public to keep up with news and updates by following the City's [Facebook](#) page and checking out Council videos.

Engineering Department:

- The Engineering Department is open and operating regular office hours - Monday to Thursday 7am to 5:30pm. The Engineering Department is located in the Public Works office. Please note signage on door with instructions for safe interaction with staff.

Fire Department:

- The Fire Department is open and continuing to provide fire response and emergency services as usual.
- The Fire Department lobby is open during normal business hours Monday - Thursday 7am to 5:30pm, Closed 12pm to 12:30pm.

Planning Department:

- The Planning Department is (virtually) open Monday - Thursday 7am to 5:30pm (Closed 12pm to 12:30pm) and continues to accept applications. Staff is available via email or phone (707-823-6167). Planning is accepting new applications; please contact staff for instructions for submittals. Click [here](#) for details.

Police Department:

- Lobby is open to the public. For non-life-or-safety-threatening situations, we encourage the public to call the 24/7 police non-emergency line at **707-829-4400**. As always, in the event of emergency, call **911**.
- [Sebastopol Police Log September 28 - October 4](#)

Public Works Department:

- The Public Works Department is open and operating regular office hours - Monday to Thursday 7am to 5:30pm. Please note signage on door with instructions for safe interaction with staff.
- Water and sewer utility systems continue to be monitored and maintained.

CITY MEETINGS

All meetings will be held virtually and are open to the public to attend via web or phone link.

Agendas for upcoming meetings can be found on the City website by clicking the "[Meetings](#)" link on the home page. Agendas will contain information about participating virtually in real time when this feature is available.

City Council Meetings:

- **Meeting Days:** First and Third Tuesday of each month
- **Meeting Time:** 6pm
- **Livestream Link:** <http://bit.ly/sebcctv>
- To submit comments before the meeting:
 - **For Items Not on the Agenda:** Members of the public may submit written emails/comments for items not on the agenda either by email as a public record or by public comment during the public comment period of the virtual City Council meeting. All written emails/comments will be provided to the entire City Council as a public record but will not be read into the minutes at the City Council meeting. Written emails/comments should be received by 5:00 pm of the Council Meeting Date for submission to the entire City Council

prior to the meeting and will be included as a part of the record of the meeting. Please submit your comments via email for this meeting to mgourley@cityofsebastopol.org

- **For Items Listed on the Agenda:** Members of the public may submit written emails/comments for items listed on the agenda either by email as a public record or by public comment during the public comment period of the agenda item during the virtual City Council meeting. **Email comments must identify the Agenda Item Number in the subject line of the email.** All written emails/comments will be provided to the entire City Council as a public record but will not be read into the minutes at the City Council meeting. Written emails/comments should be received by 5:00 pm of the Council Meeting Date for submission to the entire City Council prior to the meeting and will be included as a part of the record of the meeting. Please submit your comments via email for this meeting to mgourley@cityofsebastopol.org

- **Next Meeting:** [City Council Meeting of October 20, 2020 @ 6:00 PM](#)

Planning Commission Meetings:

- **Meeting Days:** Second and Fourth Tuesday of each month
- **Meeting Time:** 7pm
- **Livestream Link:** <http://bit.ly/sebcctv>
- To submit comments before meeting, send an email to kvanstrom@cityofsebastopol.org

- **Next Meeting:** [Planning Commission Meeting of October 13, 2020 @ 7:00 PM](#)

(NOTE: All meetings will be held virtually and are open to the public to attend via web or phone link. Information for meeting attendance can be found here: <https://www.ci.sebastopol.ca.us/Meeting-Event.aspx>)

Design Review Board Meetings:

- **Meeting Days:** First and Third Wednesday of each month
- **Meeting Time:** 4pm
- **Livestream Link:** <http://bit.ly/sebcctv>
- To submit comments before meeting, send an email to amontes@cityofsebastopol.org

- **Next Meeting:** [Design Review Board Meeting of October 21, 2020 @ 4:00 PM](#)

Public Arts Committee Meetings:

- **Meeting Days:** First Wednesday of each month
- **Meeting Time:** 10:30am
- **Livestream Link:** <http://bit.ly/sebcctv>
- To submit comments before meeting, send an email to amontes@cityofsebastopol.org

- **Next Meeting:** [Public Arts Committee Meeting of November 4, 2020 @ 10:30 AM](#)



PLANNING DEPARTMENT NEWS

Meeting Previews: The Planning Commission will continue its consideration of a proposal for a car wash at the Benedetti Tire site at the October 13th Planning Commission meeting.

SEBASTOPOL BOARDS, COMMISSIONS & COMMITTEES OPENINGS

The City of Sebastopol has the following committee position openings. Please see the links below for details on the positions and how to apply.

Planning Commission

[Job Notice](#)

[General Application](#)

Application Deadline: November 19, 2020

Design Review Board

[Job Notice](#)

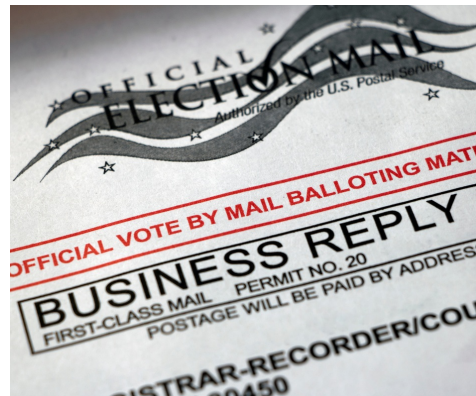
[General Application](#)

Application Deadline: November 19, 2020

VOTER RESOURCES

All registered voters in California will be sent a vote-by-mail ballot with a prepaid postage return envelope for the November 3, 2020 Election. Track your ballot using California's official "Where's My Ballot?" tool at wheresmyballot.sos.ca.gov.

If you are not registered or you need to re-register, please remember to do so no later than October 19, 2020.



SERVICE REMINDERS: TAKE THE LEAVES TO THE CART, NOT TO THE CURB

SERVICE REMINDERS RECORDATORIOS DE SERVICIO

Do not pile leaves from your property on the street. Use your compost cart. Look for your street sweeping schedule at Recology.com/Sebastopol. Avoid street parking on sweep day. Make sure trees and shrubs don't grow into the roadway.

No apile hojas de su propiedad en la calle. Utilice su carrito de abono. Busque su horario de barrido de calles en Recology.com/Sebastopol. Evite el estacionamiento en la calle el día de barrido. Asegúrese de que no crezcan árboles y arbustos en la calzada.

TAKE THE LEAVES TO THE CART



NOT TO THE CURB



WATER CONSERVATION

Please continue to practice water conservation as much as possible. California is still technically in a drought, with Sonoma County showing "Moderate Drought" conditions. Click [here](#) for more information.

DON'T FLUSH WIPES!



Flushing wipes, paper towels and similar products down toilets will clog sewers and cause backups and overflows at wastewater treatment facilities, creating an additional public health risk in the midst of the coronavirus pandemic. Please do not flush disinfectant wipes or paper towels down the toilet.

SEBASTOPOL CENTER FOR THE ARTS

The Sebastopol Center for the Arts has a fantastic fall education program lined up just for you!!

The classes include Beginning Tap Dancing for Adults and Teens, Drawing Autumn Leaves in Colored Pencil, Nature Journaling, Creative Process in Watercolor, Let's Paint the Wild at the Laguna, Ceramics at Home, and more!

[Adult Classes](#)
[Youth Classes](#)

Some classes start as soon as next week, so check them out and act fast... For full details visit the Sebastopol Center for the Arts website [here](#).

SONOMA COUNTY LIBRARY REVAMPS DIGITAL COLLECTIONS

SONOMA COUNTY LIBRARY

Digital Collections



More archives • More maps • More images • More data access

An elegant user experience
digital.sonomalibrary.org

Interested in local history, culture, art, and archives from the library's special collections? [Sonoma County Digital Collections](http://digital.sonomalibrary.org) is easier than ever to use and enjoy. The updated Digital Collections is growing all the time, so bookmark it and discover new ways to keep exploring!

Featuring

- Completely redesigned, user-friendly website
- Searchable photographs and maps from Sonoma County history and culture
- [Archival Collection Guides](#)
- Videos, audio, oral histories
- Local authors
- Community memories
- [Guides to historical research](#)
- [International Wine Research Database](#)
- And much more!

Dive into [Sonoma County Digital Collections](http://digital.sonomalibrary.org) today!

EDUCATION RESOURCES

**BORROW MORE MATERIALS FROM MORE LIBRARIES
WITH YOUR LIBRARY CARD**



LINK+

*Borrow more materials
from more libraries with
your library card*



Access More Than 9 Million Titles from Other Libraries

Can't find what you're looking for in the library collection? Try [LINK+](#), a free resource sharing service which allows you access to more than nine million titles from over 70 participating libraries in California and Nevada. All you have to do is [search](#) for and select your item, choose Sonoma County from the list of libraries, and select your preferred [curbside pickup](#) location. Books, DVDs, music CDs, audiobooks, and more may be borrowed from participating libraries.

Great precautions are being taken with deliveries outside the system—LINK+ materials are quarantined for seven days before they are moved on to you, just like book drop returns. Up to three LINK+ holds may be placed at a time. Explore a new world of books and media today with [LINK+](#)!

SCHOOL RESOURCES FROM SONOMA COUNTY LIBRARY

School Resources

Recursos Escolares

Online Library 24/7

Biblioteca Virtual 24/7



Learn a Language
Aprende un idioma



Learning Express



BookFlix



Streaming Media

Transmisión de películas y más



Study Help

Ayuda con las tareas



StudentOne Card



Lynda.com



OverDrive



Libby



sonomalibrary.org

This is a challenging time for our community, and Sonoma County Library is here to help with your back-to-school needs. Are you a parent of a school-age child or children? A student yourself? Maybe you want to enrich your self-learning. We've put together a list of resources that you may find useful during the school year...and beyond!

- Access educational [eBooks, and eAudiobooks, stream movies and more](#). This includes always-available eBooks and eAudiobooks such as [Diverse Reads for Teens](#) and [Diverse Reads for Kids](#) on OverDrive.
- Students of any age can connect with free tutors and more at [Tutor.com](#).
- Our Student OneCard partnership provides students access to library resources using their student ID number. [See the list of participating schools and learn more about Student OneCards](#).
- Earn your high school diploma online with [Career Online High School](#).
- Learn at home with our [Great Courses collection](#) on OverDrive. Explore 200 expertly-produced audio and video courses by professors such as Neil DeGrasse Tyson!
- Your library card gives you access to [Lynda.com](#), an online learning service that teaches business, technology, and creative skills through video tutorials.
- [LearningExpress Library](#) features nearly 1,000 online tutorials, practice tests, and eBooks for all ages.
- Why not use this time to learn a new language or brush up on one you're already familiar with? [Mango Languages](#) is fun and easy to use.

Still hungry for more? Your online library never closes. [View More eResources](#)

ONLINE EDUCATION RESOURCES



See the [Sonoma County Office of Education](#) website for news and information about Sonoma County schools.

The [PBS LearningMedia](#) website has several free online resources including standards-aligned videos, interactives, lesson plans, and more. The website also includes [PreK-12 Resources for Emergency Closings](#) that include activities, lesson plans, and videos organized by grade and subject area.

Contact
Us



7120 Bodega Avenue, Sebastopol, CA 95472

707-823-1153

www.CityofSebastopol.org