



# City of Sebastopol Community Newsletter

[www.CityofSebastopol.org](http://www.CityofSebastopol.org)

December 4 - December 10 Special Weekly Edition of  
Sebastopol Community Newsletter

Please visit the City of Sebastopol website at [www.CityOfSebastopol.org](http://www.CityOfSebastopol.org) for the most up-to-date local information on the coronavirus crisis. There is a page dedicated entirely to the crisis, the [Novel Coronavirus \(COVID-19\) Resource Page](#), where you will find specific resources and answers to many questions that you may have. The City of Sebastopol is also on [Facebook](#), [Twitter](#), and [NextDoor](#).

[View as Webpage](#)

KNOW SOMEONE INTERESTED IN RECEIVING THIS NEWSLETTER? FORWARD  
THIS EMAIL.

WAS THIS EMAIL FORWARDED TO YOU BY SOMEONE ELSE?

Click Here To  
Subscribe

## PROTECT YOUR FAMILY AND COMMUNITY FROM COVID-19.



Cover



Wash



Remove



Shower



Clean

[covid19.ca.gov](http://covid19.ca.gov)

SONOMA COUNTY ADOPTS STAY HOME ORDER THAT  
GOES INTO EFFECT AT END OF DAY FRIDAY, DEC. 11





Due to rising COVID-19 case numbers and hospitalizations, Sonoma County will join six other Bay Area counties and the city of Berkeley in preemptively adopting the California Department of Public Health's Stay-Home Order beginning at **12:01 a.m. on Saturday, Dec. 12**. The local order adopts the restrictions contained within the State's recently announced Regional Stay-at-Home order.

Under the order, residents will be directed to stay at home except for work, shopping or other essential activities, such as medical appointments, allowed by the State's Regional Shelter in Place Order. All sectors other than retail and essential operations must be closed. Outdoor recreation will be allowed. **The new restrictions will remain in place until 11:59 p.m. on Saturday, Jan. 9, 2021.**

See the full [Press Release](#) for details.

---

## COUNTY DISCUSSES USE OF SEBASTOPOL INN FOR PROJECT HOMEKEY HOMELESS SERVICES AT DEC. 15 CITY COUNCIL MEETING

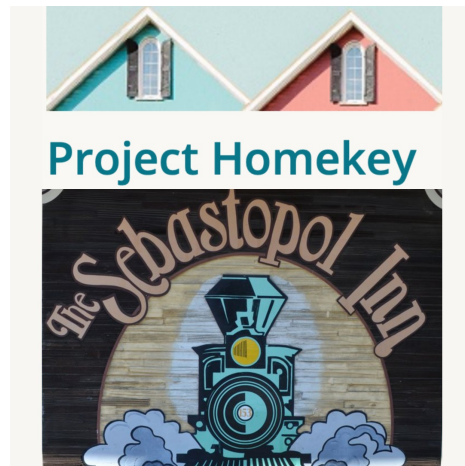
On June 30, 2020, Governor Gavin Newsom announced [Project Homekey](#) as the State's next phase of response to protect homeless Californians from COVID-19. The County of Sonoma has announced that funding was awarded to the County to purchase the Sebastopol Inn as part of Project Homekey. Per the County, the following will be placed at the Sebastopol Inn:

\* COVID-vulnerable individuals include those who are over the age of 65 years and/or with chronic or acute health conditions such as cancer, chronic obstructive pulmonary disease (COPD), liver disease and individuals who are immunocompromised.

\* Homeless sheltered at Non-Congregate Sites (NCS) qualify for placement at the hotel.

At the December 15th City Council Meeting, Sonoma County representatives will be available to take questions about the Sebastopol Inn purchase and will present plans for next steps, move-in dates, and operations. The City encourages the public to attend this meeting.

Members of the public are invited to attend the December 15 meeting virtually via Zoom. This meeting will begin at 6:00 pm. The agenda and instructions on how to attend the meeting will be available [here](#) closer to the meeting date. If you are not able to attend the meeting, and/or have feedback or questions that you would like the City Council to consider, please sent them via email to [citycouncil@cityofsebastopol.org](mailto:citycouncil@cityofsebastopol.org).



---

## BICYCLE-PEDESTRIAN PATHWAY LISTENING FORUM - DECEMBER 16





## Join us for a community **LISTENING TOUR**

Help shape the future of SMART

Conducted on Zoom

### **The SMART Board of Directors would like to hear from you!**

The SMART Board is hosting a series of Listening Forums across Sonoma and Marin counties to bring community members together to exchange ideas on how to best position SMART for the future.

The Listening Forums will enable a dialogue where the SMART Board can hear from you and others, from all sectors of the broader North Bay community. Participants are encouraged to share their ideas and comments on any aspect of SMART. Your participation in these conversations will help shape the future of SMART, an integral part of the region's economy as we recover from the COVID-19 health and economic crisis.

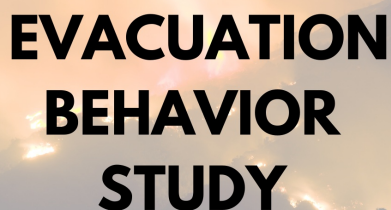
**The December 16 forum is about the Bicycle-Pedestrian Pathway - Register [here](#).**

#### **Meeting Details:**

- Participation in the Listening Forums is FREE
- 90-minute sessions from 5:00 PM – 6:30 PM
- Structured as a community conversation on Zoom teleconference
- Listening Forums will be scheduled for both Sonoma and Marin counties – register by clicking the link provided with your community and date.
- If you cannot attend a specific listening forum meeting, you may attend any other listening forum and have an opportunity to share your thoughts about the future of SMART

---

## **PARTICIPATE IN THE EVACUATION BEHAVIOR STUDY ONLINE SURVEY**



### **EVACUATION BEHAVIOR STUDY**

The University of Florida is working on an important study regarding modeling behavior in evacuations, using the Kincade Fire as their case. This research aims to better understand and model the wildfire evacuation behavior by conducting a study with people affected by the 2019 Kincade Fire in Sonoma County, CA.

Wildfires have become an escalating problem in California. In order to adapt to the changing threat of wildfires, it is important to understand the household evacuation process, including how people perceive

wildfire threat and respond to it. To better understand the wildfire evacuation behavior during the Kincade Fire in Sonoma County, the research team will survey those affected using interpretable machine learning to explore how different factors influenced risk



perception, evacuation decision making, and subsequent evacuation behavior during the fire.

Learn more about the Modeling of Evacuation Behavior in the 2019 Kincadee Fire research study and participate in the online survey [here](#).

---

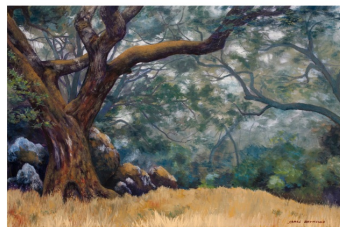
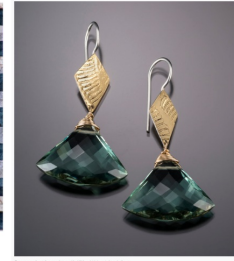
## FOUR ARTISTS WIN THE SEBASTOPOL PUBLIC ARTS COMMITTEE COVID ARTIST LOTTERY

During the COVID-19 pandemic, the City of Sebastopol Public Arts Committee created the COVID Artist Lottery to help support local artists during this difficult time.

Four artists have been selected to receive the \$1,000 grant. The winners are:

[Patricia Marina](#) - Collagist  
[Stella Monday](#) - Photographer  
[Shelley Rae](#) - Jewelry Artist  
[James Reynolds](#) - Painter

Shelley Rae's work can be seen now at the Sebastopol Gallery. The PAC is working with the other artists to display their work around town.



**Artists Clockwise from Top Left:**  
Stella Monday - *Duomo, Siena, Italy*  
Shelley Rae - *Green Amethyst Fan Earrings*  
Patricia Marina - *SIP Birthday Bouquet*  
James Reynolds - *Bay Trees*

### Recipients expressed their gratitude with the following remarks:

*Wow, that's fantastic news! I was denied any sort of federal unemployment support, so this means a lot.*

*My gratitude to the city. It gives me hope that our city cares about the well being of artists.*

*This timing couldn't be better - my 20-year old printer just died and I had to spend an unexpected \$1000 on a new printer for my work. I'm not sure I've ever won anything before. This is so terrific, as I am embarking on a many year project to produce a coffee table book of my art.*

---





# Add Your Phone. Stop the Spread.

Get COVID-19 exposure notifications.



**CA NOTIFY**



[canotify.ca.gov](https://canotify.ca.gov)

## SONOMA COUNTY WINTER SHELTERS



Sonoma County Winter Shelters offer 16 beds in addition to year-round shelters and help to protect people from the year's harshest weather. Spaces are available on a first-come, first-served basis, and may offer wraparound services as well.

[Winter Shelter Flyer - English](#)  
[Winter Shelter Flyer - Español](#)

## SEBASTOPOL COMMUNITY VITALITY RECOVERY + RESILIENCY SURVEY





CoMission, in concert with the City of Sebastopol, has put together a very important survey. It will help make a thorough analysis of the economic and community impacts the pandemic has had in our amazing town. Ultimately, it will assist in the ongoing effort to strengthen community vitality.

The feedback received will be crucial in identifying impacts, assessing what resources are needed, and creating policies to assist local businesses, non profits, and Sebastopol residents and community.

[Sebastopol Community Vitality Recovery + Resiliency Survey](#)

---

## LOCAL HAZARD MITIGATION PLAN PUBLIC SURVEY



### LOCAL HAZARD



### MITIGATION PLAN

The federal government requires states and local governments to have hazard mitigation plans approved by the Federal Emergency Management Agency (FEMA) that are consistent with the Disaster Mitigation Act of 2000 for a jurisdiction to qualify for Federal Hazard Mitigation Grant funds. Mitigation planning is the process of identifying hazards to which jurisdictions are at risk as well as the development of actions that will reduce or prevent damages from those hazards.

One of the key components of a hazard mitigation plan is public input during the planning process. The purpose of this survey is to collect information from the public to better understand the vulnerabilities within the City, as well as solicit input on needs to best mitigate, or reduce the impacts of hazards before they occur. Your comments will be considered by the City's planning committee as the LHMP is developed. It should not take more than 5-10 minutes to complete this survey.

[City of Sebastopol Hazard Mitigation Plan Public Input Survey](#)

**Please complete by January 31, 2021. Thank you for your participation.**

---

**MASK UP AND SUPPORT LOCAL FARMS BY SHOPPING THE FARMERS' MARKET**



As we approach the holidays, now is a great time to get all the fresh ingredients you need by shopping the farmers markets. The [Sebastopol Farm Market](#) is a great way to support local farmers and source healthy and delicious food for your family. While the market is year-round, it has moved to its smaller winter footprint, opening up more parking in the Plaza parking lot for holiday shoppers.

The Sebastopol Farmers' Market also offers curbside pickup. Check out their [website](#) for a list of vendors and to order curbside pickup.



Slow Cat in her new weatherproof holiday mask sewn by volunteer Kathy Oetinger.

**It's now even more important that everyone attending the market protect the health and safety of the entire community by stringently following all state and county health guidelines. REMINDER: Anyone in the plaza must be in compliance by wearing a face mask and practicing social distancing. The Farmers' Market is such a valuable resource and we don't want to lose it!**

**Masks are now mandatory at all times in public for anyone over the age of 2 with extremely limited exceptions. See the California Department of Public Health guidelines [here](#). Please help preserve the viability of this valuable resource by wearing a mask and urging those around you to do the same.**

## **TAKE THE VISION ZERO SURVEY AND HELP END TRAFFIC FATALITIES IN SONOMA COUNTY**



Vision Zero is a countywide initiative, led by a partnership between the Sonoma County Department of Health Services and the Sonoma County Transportation Authority, which pledges to reduce all traffic related deaths to zero. The purpose of this survey is to gain an understanding of traffic safety concerns and experiences within the county as a way to inform the development of the Vision Zero Action Plan for Sonoma County. Your answers are confidential. This will take 5-10 minutes to complete.

[\*\*VISION ZERO SURVEY \(ENGLISH\)\*\*](#)

[\*\*ENCUESTA DE VISIÓN CERO \(ESPAÑOL\)\*\*](#)

**OLDER ADULTS CAN STAY CONNECTED DURING THE HOLIDAYS AT (707) 565-INFO**



## Wellness Check-in Calls and Services Provide Support, Ease Isolation



Though the coronavirus may keep families from traveling to see loved ones for the holidays, older adults 60+ can still stay connected to helpful services, meals and wellness checks by calling the Sonoma County Area Agency on Aging Information & Assistance Line at [\(707\) 565-INFO \(4636\)](tel:7075654636).

Helpful, friendly social workers with expertise in aging issues can link callers to all types of helpful resources and county and community programs, including peer counseling, meals, caregiver support, in-home care and transportation to medical and other appointments.

The hours for the Information & Assistance Line are Monday-Friday, 9 a.m.– 4 p.m. During other times, please leave a voicemail and a social worker will respond within 48 hours. They will also answer questions by email at [565info@schsd.org](mailto:565info@schsd.org).

The goal of the Information & Assistance Line is to help provide every older adult in our County the knowledge and access to programs that help them live longer, live safely and live well in any location they call home.

For more information see the [Press Release](#).

---

## SONOMA COUNTY ISSUES RECOMMENDATIONS FOR SAFER HOLIDAYS AND TRAVEL

**Sonoma County joins health officials from ten Bay Area counties in issuing recommendations for safer holidays and travel - Public urged to protect yourself and others from COVID-19**

SANTA ROSA, CA – The Sonoma County Department of Health Services joined health officers from the counties of Alameda, Contra Costa, Marin, Monterey, Napa, San Mateo, San Francisco, Santa Clara, Santa Cruz and the city of Berkeley in issuing joint recommendations for staying safe during the holidays. The recommendations cover gatherings and travel, with recommended steps to reduce risk.



"With cases rising around the country, and continued high levels of COVID-19 here in Sonoma County, we must remain steadfast in our commitment to keep our community safe," said Dr. Sundari Mase, Health Officer for the County of Sonoma. "The best gift you can give to your families and friends this holiday season is safety. When possible, please celebrate at home with household members and limit travel."

The joint recommendations advise the public that if you gather in person, keep it small, short, stable, and outdoors. Also, nonessential travel, including holiday travel, is not recommended. Travel outside the Bay Area will increase your chance of getting infected and spreading the virus to others after your return. For those who are traveling, there are tips to help avoid catching COVID-19 or spreading it to fellow travelers. If you travel outside the Bay Area, it is strongly recommended that you self-quarantine for 14 days after your return if your activities while traveling put you at higher risk of getting COVID-19.

**CELEBRATE WITHOUT GATHERING**



The safest way to celebrate this holiday season is to do so virtually or with members of your household. Gathering with people outside your household – even extended family – increases the risk of getting and spreading COVID-19. Limit gatherings to no more than 12 people from no more than three households. However, there are many ways to enjoy the holidays with loved ones without gathering:

- Enjoy holiday traditions at home with your household
- Decorate your home and/or yard
- Share a virtual meal with family and friends
- Host online parties and/or contests
- Prepare meals using traditional recipes and deliver to family and neighbors
- Participate in drive-by events where everyone stays in their vehicles

See the SoCoEmergency [website](#) for additional recommendations.

---

## CITY DEPARTMENT HIGHLIGHTS

**Throughout the holiday season we'll be highlighting one city department each week.**



### **Holiday message from Administrative Services Director Ana Kwong:**

No doubt this 2020 year has required “MORE” from all of us in so many ways. As the holiday season approaches, I’d like to take the opportunity to express my appreciation for the ways in which the Administrative Services team is able to adapt and accommodate change as they continue showing up at work despite the risks to continue to deliver the service of serving the community.







IT'S UP TO YOU.  
FIGHT THE FLU.

WHO WILL YOU PROTECT?

#SonomaStrong



## COVID-19 & HEALTH UPDATES

### CURRENT STATE TIER ASSIGNMENT FOR SONOMA COUNTY: PURPLE

Based on this week's numbers, Sonoma County remains in the purple tier of California's Blueprint for a Safer Economy. This is the most restrictive level and is based on two main metrics — new daily cases per 100,000 and test positivity rate.

We have an adjusted new case rate of **17.9**. This is beyond the benchmark of 7, which is what is required to move us into a less restrictive tier. We have a test positivity rate of **5.7%**, which is below the benchmark of 8.0% to move us into the next tier. We have an equity testing positivity rate of **8.2%**, which is above the benchmark 8.0% to move us to the next tier. The Bay Area region ICU bed availability is **20.9%**.

In order to move to the red tier, Sonoma County must either: 1) meet the state benchmarks for all the three metrics above for two weeks or 2) meet the testing positivity benchmark and have an equity metric rate of less than 5% for two weeks, even if the case rate is still above the benchmark.

Current status and information about tiers and allowable activities can be found at [California's Blueprint for a Safer Economy](#).

### STATE ISSUES NEW LIMITED STAY AT HOME ("CURFEW") ORDER



Effective November 21 and continuing through December 21, all gatherings with members of other households and all activities conducted outside the residence, lodging, or temporary accommodation with members of other households must cease between 10:00pm PST and 5:00am PST, except for those activities associated with the operation, maintenance, or usage of critical infrastructure or required by law.

See full details [here](#).

---

## NEW ONLINE TOOL AVAILABLE TO BOOK COVID-19 TESTING APPOINTMENTS



Sonoma County is conducting **free, confidential COVID-19 Viral** testing for those that live or work in Sonoma County. You can now make an appointment online by visiting the online scheduler [here](#) and selecting one of the available locations (you do not need to create an account to make an appointment).

- **Each individual must schedule their appointment separately.**
- Each person must provide a **unique email address OR cell phone number** in order to receive results automatically. (Email address not required for appointment)
- Two people cannot share the same email nor cell phone number.
- If you need help making appointments for multiple family members or young children, call our hotline at 707-565-4667.

Visit the SoCo Emergency website [here](#) for more testing information.

---

## LEGAL AID OF SONOMA COUNTY COVID-19 PROTECTIONS FOR TENANTS

Legal Aid of Sonoma County created additional resources in both English and Español to explain COVID-19 tenant protections. These resources were designed to help Sonoma County tenants and landlords navigate a California law, the COVID-19 Tenant Relief Act of 2020.

[COVID-19 Rental Assistance for Sonoma County Renters & Landlords Flyer](#)



### Resources in English

- [One-page flyer about COVID-19 protections for tenants](#)
- [Copy of a Declaration of COVID-19-Related Financial Distress](#)
- [Monthly Rent Template Letter](#) that tenants can send to their landlord instructing them to apply any rent payments to the current month – this version is for September but tenants can update it for any month they are able to make a rent payment
- [FAQ for Tenants](#)
- [FAQ for Landlords](#)



## Los Recursos en Español

- [Folleto de una página sobre las nuevas protecciones COVID-19 para inquilinos](#)
- [Copia de una Declaración de Socorro Financiero COVID-19-Relacionado](#)
- [Carta de plantilla de alquiler mensual](#) que los inquilinos pueden enviar a su arrendador indicándoles que apliquen cualquier pago de alquiler al mes actual – esta versión es para septiembre, pero los inquilinos pueden actualizarla para cualquier mes que puedan hacer un pago de alquiler.
- [Preguntas frecuentes para inquilinos](#)
- [Preguntas frecuentes para propietarios](#)

See the [Community Support Resources](#) page for additional resources from Legal Aid of Sonoma County.

---

## EXPANDED FREE COVID-19 POP UP TEST SITES

The County of Sonoma is doubling the number of pop-up test sites available to the public beginning Tuesday, Oct. 20 and is encouraging residents, particularly those disproportionately impacted by the coronavirus, to be tested regardless of whether they have symptoms or have been exposed to someone who is COVID-19 positive. [Read the press release.](#)

---

## OUTDOOR PLAYGROUNDS CAN REOPEN WITH COVID-19 RESTRICTIONS

The California Department of Public Health announced that outdoor playgrounds and other outdoor recreational facilities can reopen. Visitors to outdoor community playgrounds must comply with the following requirements:

- Face masks over the mouth and nose are required for everyone 2 years of age or older with caregiver supervision at all times to ensure face mask use.
- Do not use the playground when different households are unable to maintain a physical distance of 6 feet or when the capacity limit has been reached.
- Caregivers must monitor to keep adults and children from different households at least 6 feet apart.
- Consider coming on different times or days to avoid wait times and potential crowded times.
- No eating or drinking in playground, to ensure face masks are worn at all times.
- Wash or sanitize hands before and after using the playground.
- Elderly and persons with underlying medical conditions should avoid playground when others are present.
- Limit visit to 30 minutes per day when others are present.



[Learn more, about the state's guidelines for outdoor playgrounds.](#)

---

## SHOULD YOU GET A FLU VACCINE?

As the flu season approaches, health experts are concerned that adding another respiratory illness to the healthcare system during the COVID-19





pandemic could overburden providers and facilities. Getting the flu vaccine can help keep you and your loved ones healthy, while helping conserve local healthcare resources.

The CDC recommends that all people 6 months and older get a flu vaccine every year, and we know it's especially important this year. Getting vaccinated now, before influenza is widespread in the community, can help ensure you are protected.

Though the flu vaccination is not 100% effective in stopping a person from getting the flu, a vaccine can make flu symptoms less severe. As we deal with this pandemic, having milder symptoms will help reduce hospitalization rates. Additionally, if fewer people have flu-like symptoms there will be more testing capacity for those who experience fevers, chills, and respiratory issues associated with both conditions. Finally, because it is possible for people to have COVID-19 and the flu simultaneously, patients can save themselves the discomfort and possible serious consequences of having both viruses in their systems at the same time.

---

## **SONOMA COUNTY COVID-19 CASE DATA**

Click [here](#) to view Sonoma County's COVID-19 case data.

---

## **SONOMA COUNTY COVID-19 TESTING INFORMATION**

Click [here](#) to view Sonoma County's COVID-19 testing information.

---

## **REUSABLE BAGS ARE NOW ALLOWED IN GROCERY STORES AND RETAIL ESTABLISHMENTS**



# COVID -19 BAG USE

## USO DE LA BOLSA REUTILIZABLE DURANTE COVID -19

### **CUSTOMERS SHOULD LEAVE REUSABLE BAGS IN THE SHOPPING CART WHEN CHECKING OUT.**

LOS CLIENTES DEBEN DEJAR LAS BOLSAS REUTILIZABLES EN EL CARRITO DE COMPRAS AL MOMENTO DE HACER SU PAGO.



### **CUSTOMERS SHOULD NOT PUT REUSABLE BAGS ON THE CHECKOUT CONVEYOR BELT.**

LOS CLIENTES NO DEBEN PONER LAS BOLSAS REUTILIZABLES EN LA BANDA TRANSPORTADORA QUE ESTÁ EN LA CAJA DE PAGO.



### **CUSTOMERS MUST BAG THEIR OWN PURCHASES.**

LOS CLIENTES DEBEN PONER LAS COMPRAS DE MERCADO EN SUS BOLSAS REUTILIZABLES ELLOS MISMOS.



### **STORES MAY PROVIDE A REUSABLE BAG OR RECYCLED PAPER BAG TO CUSTOMERS FOR A MINIMUM 10¢ CHARGE.**

LAS TIENDAS PUEDEN PROPORCIONAR UNA BOLSA REUTILIZABLE O BOLSA DE PAPEL RECICLADO A LOS CLIENTES POR UN CARGO MINIMO DE .10 CENTAVOS.



[ZEROWASTESONOMA.GOV/CARRYOUTBAGS](https://zerowastesonoma.gov/carryoutbags) ECO-DESK 565.3375



SONOMA COUNTY WASTE MANAGEMENT AGENCY (ZERO WASTE SONOMA)  
WASTE REDUCTION PROGRAM FOR CARRYOUT BAGS ORDINANCE 2014-2

LA AGENCIA SONOMA COUNTY WASTE MANAGEMENT (ZERO WASTE SONOMA) PROGRAMA DE REDUCCIÓN DE RESIDUOS PARA LA ORDENANZA 2014-2 DE BOLSAS PLÁSTICAS DESECHABLES



JUNE, 2020

## HANDWASHING STATION LOCATIONS IN DOWNTOWN SEBASTOPOL

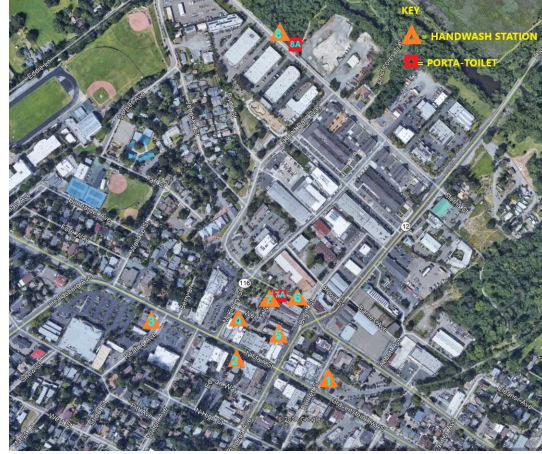
In an early response to help make our community safer during the COVID-19 pandemic, the City of Sebastopol set up a number of handwashing stations throughout the downtown area in mid-March.

In the meantime, we've added more locations and re-located some of the stations to be more convenient, including new portable restrooms and handwash facilities on Morris Street for homeless support services.



## Current locations are:

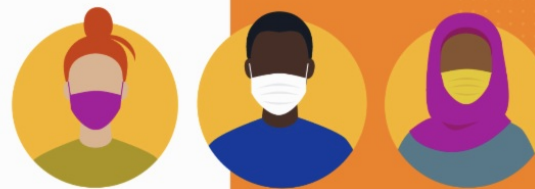
- 1) City Parking Lot at Main St. and Burnett
- 2) North Main St., mid-block (south side of street between Bodega and Wilton)
- 3) 328 N. Main Street - On sidewalk entrance Community Bank parking lot
- 4) Adjacent to southwest corner of Town Plaza parking lot against rear wall of Silk Moon
- 5) Sebastopol Ave. (Route 12) at alley between Ramen Gaijin and WestAmerica Bank
- 6) 6902 Sebastopol Ave - Screamin' Mimi's Ice Cream- at side window on Petaluma Ave
- 7) & 7A) Outside public restrooms on east side of Town Plaza. There are also portable toilets at this location.
- 8) & 8A) Morris St. north of Laguna Park Way, northeast side of street. There are also portable toilets at this location



# WEAR A MASK.

Slow the spread.

[covid19.ca.gov](https://covid19.ca.gov)



Coronavirus spreads when an infected person speaks, sneezes, or coughs within 6 feet of others. You may have the virus and spread it even if you feel well.

To prevent infection, you must cover your nose and mouth when outside your home. So wearing a mask is now required statewide. Wearing a mask or cloth face covering can slow the spread of COVID-19 by limiting the release of virus into the air. It also reinforces physical distancing, and shows you care about the health of others.

Don't wear your mask under your nose or just on your chin. A mask is only effective if it covers both ways you breathe.

### Who needs a mask?

- Anyone going outside their home
- Workers in customer-facing industries
- Workers in offices, factories, or any group setting
- Doctors, nurses, and other health care professionals
- Other workers, as dictated by [industry guidance](#)

### Who shouldn't wear a mask?

- Children under 2 years old
- Anyone with respiratory issues where it would impede their breathing
- Anyone unable to remove the mask without help
- Anyone with a medical condition, mental health condition, or disability that does not allow them to wear a mask

See a [complete list](#) of who should not wear a mask.



### When should you wear a mask?

You should wear a mask or face covering whenever you'll be around someone you don't live with, including:

- In any indoor public space
- When waiting in line
- When getting health care
- On public transportation or when ride-sharing
- At work, when near others or moving through common areas
- Outdoors, if you can't stay 6 feet away from others

### When can you take off your mask?

There are times when it's okay to take your mask off when you're away from home, such as:

- When eating or drinking
- If a hearing-impaired person needs to read your lips
- If wearing a face covering imposes a risk to you at work – for example, if it could get caught in machinery
- When you're not sharing a common area, room or enclosed space with others
- When you are getting a service to the nose or face
- When outdoors in public and can stay six feet from others

You should replace the mask as soon as you can after these activities to reduce the risk of infection.

For more information visit <https://covid19.ca.gov/masks-and-ppe/>

## NEED HELP WITH ESSENTIAL RESOURCES?

Visit the [2-1-1 Free Referral Service](#) website if you have questions or needs.

For additional assistance, resources, and help with essential needs, see the [SoCo Emergency](#) resources webpage.

## ESSENTIAL SERVICES WILL CONTINUE:

- **The City of Sebastopol will not turn off water due to nonpayment.** The City recognizes the hardship that the pandemic and resulting Shelter in Place Orders, have created in our community, and will temporarily suspend non-emergency turnoffs and late fees.
- **PG&E will not cut off power due to nonpayment.** PG&E voluntarily implemented a moratorium on service disconnections for non-payment, effective immediately. This suspension will apply to both residential and commercial customers and will remain in effect until further notice.
- **Recology will not suspend trash service due to nonpayment.** Recology understands that customers are starting to request delay of payments or payment plans due to the circumstances, and they are sensitive to what the community is going through. Recology will not stop service due to non-payment at this time.

Click [here](#) for more information on Essential Services during the COVID-19 Pandemic.

## WEEKLY COVID-19 VIDEO UPDATES

See the City's [Coronavirus \(COVID-19\) Resource Page](#) for recent City, County, and State video updates.



## WARM LINE FOR EMOTIONAL & MENTAL HEALTH SUPPORT



WARM LINE FOR  
EMOTIONAL &  
MENTAL HEALTH  
SUPPORT

The last few months have been very difficult for everyone in our community. You may be feeling stressed, isolated, depressed, and anxious. You do not need to suffer alone. Help is available.

**Please call the Sonoma County Warm Line  
for Emotional and Mental Health Support:**

**(707) 565-2652**

**Or visit [SoCoEmergency.org](http://SoCoEmergency.org)**

*This free and private warm line is available seven days a week from 10 a.m. - 7 p.m. Telephone interpretation for other languages is available.*



## CREDIBLE SOURCES FOR COVID-19 UPDATES

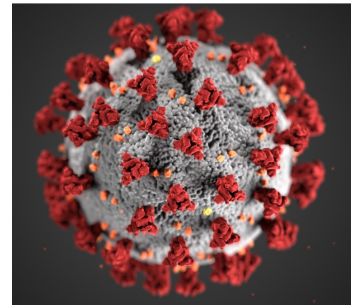
[California Department of Public Health](#)

[County of Sonoma Department of Health Services](#)

[SoCo Emergency Page](#)

[Centers for Disease Control and Prevention \(CDC\)](#)

[World Health Organization \(WHO\)](#)



## LEGAL AID'S DISASTER TEAM IS HERE TO HELP PEOPLE IMPACTED BY COVID-19

If you have employment questions, benefits questions, or any other legal issues related to the pandemic, please contact Legal Aid of Sonoma County.



# Legal Aid of Sonoma County

## Disaster Relief Team

*The Disaster Relief Team has assisted hundreds of survivors with their recovery.*

### We assist disaster survivors with:

- ❖ Disaster Unemployment Insurance
- ❖ EDD Appeals
- ❖ Price Gouging
- ❖ FEMA Benefits
- ❖ Information and Referrals
- ❖ Other legal issues resulting from a disaster or declared emergency, including COVID-19

Contact us for a free, confidential appointment with our Disaster Relief Team to discuss your legal rights or navigate the recovery process.

### Contact Us:

Legal Aid Disaster Relief COVID-19  
Response Hotline  
**(559) 429-6974**

**Para asistencia en español, por favor llame al (707) 542-1290.**



Legal Aid's mission is to promote social justice and advance basic human rights for vulnerable people in our community.

### Our Team:

**Kendall Jarvis, JD, LMN**  
*Disaster Relief Attorney*  
[kjarvis@legalaidsc.com](mailto:kjarvis@legalaidsc.com)

**Kristopher Lopez, JD**  
*Disaster Relief Attorney*  
[klopez@legalaidsc.com](mailto:klopez@legalaidsc.com)

**Tomás González**  
*Disaster Relief Caseworker*  
[tgonzalez@legalaidsc.com](mailto:tgonzalez@legalaidsc.com)

---

## FIRE SAFETY & PREPAREDNESS

---

### HAVE YOUR GO BAGS READY!

**Are you prepared to evacuate if necessary?  
Are your go bags ready?**

Even though Sebastopol hasn't been under any evacuation orders or warnings during the recent fire incident, all citizens should be prepared to evacuate in the event one becomes necessary.



Everyone in your family should have their own Go Bag that contains a minimum of 72 hours worth of essential supplies. Personalize kits and keep them where they can easily be reached—at home, in the car, at work or school.

This is particularly important during fire season when a quick getaway may be needed. A backpack or other small bag is best for these kits so that they can be easily carried in an evacuation. During the COVID-19 pandemic additional considerations for your Go Bag include cloth face coverings, hand sanitizer, anti-bacterial wipes, and a thermometer.



[Build A Personal Go Bag](#)

---

## SIGN UP FOR ALERTS

**Make sure that you have signed up for:**

[SoCoAlerts](#); and

Nixle Alerts (either [online](#) or by texting your zip code to 888777)

It is important to register for both types of alerts. If you receive Nixle alerts, read them thoroughly and click on any links.

Text Fire or Fuego (for Spanish) to 211-211 for updates.

More information on alerts may be found [here](#).

---



# KNOW YOUR ALERTS

The City of Sebastopol uses multiple notifications and warning systems to make sure emergency alerts are delivered to the people who need the information.



## Emergency Alert System (EAS) - No Registration Required

National public warning system that will interrupt local broadcast tv and radio programming to provide an alert in the event of a large-scale emergency.



## Wireless Emergency Alerts (WEA) - No Registration Required

Urgent alerts sent as text-like messages to your mobile phone based on your location (you will only receive notification if you are in the area of the emergency). WEAs have three alert categories– Imminent Threat, AMBER, Presidential. You must keep the factory settings on to your WEA- capable phone to receive a WEA.



## SoCoAlert - Registration Required

Emergency notification service providing Sonoma County first responders the ability to alert residents by landline or mobile phone, text message and email about imminent threats to life and property in specific impacted areas. Register all addresses that you'd like to receive alerts for (work, child's school, etc.). You don't have to be in the location of the emergency to receive alert.

Must register at [SoCoAlert.com](http://SoCoAlert.com) OR call (866) 939-0911, press "0" at the menu, ask operator for assistance with registering for SoCoAlert.



## Nixle - Registration Required

Community information service managed by Sonoma County Fire District and Sonoma County Sheriff's Office. Community messages are sent to email, and for critical emergencies, Alert messages are sent via text message and email (notifications are NOT delivered by phone call). Customize your settings at [nixle.com](http://nixle.com) to control which types of notifications you receive. Must register at [nixle.com](http://nixle.com) or text your zip code to 888-777



## Local Radio and Television

Local news broadcasters to provide updates during an emergency. Tune radio to 1350 AM, 103.5 FM, 100.1 FM, 89.1 FM (bilingual), 98.7 FM (Spanish); watch preferred local TV news channel.



## Hi/Lo Sirens

Sebastopol police cars and fire department vehicles are outfitted with new Hi/Lo sirens, a different sound than traditional sirens. This European-style, 2-tone siren will only be used in an emergency to alert residents within specific areas of the need to evacuate.

### Other Ways to Stay Informed

Sebastopol Police Dept.   
Sebastopol Fire Dept.   
City of Sebastopol  



More information on emergency alerts and notifications at [SoCoEmergency.org](http://SoCoEmergency.org)

Thank you to the City of Santa Rosa for sharing their graphics.



**FOR NON-EMERGENCY SUPPORT  
FOR FIRES IN SONOMA COUNTY  
DIAL 2-1-1 OR TEXT "FIRE" TO 211-211**

**PARA AYUDA CON LOS INCENDIOS EN EL CONDADO  
DE SONOMA QUE NO SEA DE EMERGENCIA,  
MARQUE 2-1-1 O MANDE UN MENSAJE DE TEXTO  
CON LA PALABRA "FUEGO" AL 211-211.**

**FREE + AVAILABLE 24/7 GRATIS + DISPONIBLE 24/7**



Get Connected. Get Help.™



POWERED BY: United Way of the Wine Country

# WILDFIRE IS COMING. ARE YOU READY?

**As we have all seen with recent events, fire season is upon us. While Sebastopol did not come under an evacuation warning or order, we must continue to prepare.**

All citizens are urged to step up your emergency planning for wildfires, including maintaining defensible space around the home, having an emergency plan in place, preparing a "go-bag" (including masks, gloves, and sanitizer), evacuating if ordered, and knowing several routes out of town. See the links below for more information and resources.

[Homeowners Checklist: How to Make Your Home Fire Safe](#)  
[Ready, Set, Go! Your Personal Wildfire Action Plan](#)  
[Defensible Space and Hardening Your Home](#)  
[Download and Complete your Personal Emergency Plan](#)  
[Resources for Access & Functional Needs Populations](#)

Visit [readyforwildfire.org](https://readyforwildfire.org) for quick information on fire preparedness and what to pack in the event of an evacuation. COVID-19 precautions still apply, so be sure to include masks, gloves, and sanitizer in your [go-bag](#). Review the [Evacuation Plan Checklist](#) and the [Be Ready: Evacuation Timeline](#) to help you prepare.

The Sebastopol Fire Department has confirmed that there is no evacuation "Zone Number" for Sebastopol City Limits. In the event of an evacuation warning or order, it will say "City of Sebastopol" or "Sebastopol City Limits." Unincorporated Sebastopol is Zone 4. [Zone Map](#).



[Here is the current map](#) showing “Planned Evacuation Zones” in and around Sebastopol. This may change.

Governor Newsom also reassured citizens that, in the case of evacuation, planning is in place for emergency shelters that will operate under COVID-19 social distancing guidelines.

---

## BUSINESS NEWS

---

### BUSINESS LICENSE APPLICATIONS AND RENEWALS



We're moving to a completely paperless system for business license applications and renewals. Renewal notices will be sent electronically to the email info we have on file. Make sure your contact information is updated. You can check and update your information at our renewals portal [here](#). We're also upgrading our online business directory to allow you to make it easier for your customers to find your business. Make sure that your business information is up to date by visiting the online portal [here](#) where you can also apply for a business license. Please make sure to fill out all applicable fields. Give us a call at **(707) 823-7863** with any questions.

---

### NEW PARKLETS INSTALLED IN DOWNTOWN SEBASTOPOL

The Sebastopol Public Works Department has completed the installation of 3 temporary public parklets in Downtown Sebastopol.

The finalized parklet locations are:

1. 6902-6910 Sebastopol Ave (the parking and westbound drive aisle in front of Create It! and Screamin' Mimi's)
2. 116-120 S Main St (the parking area in front of People's Music)
3. 124-130 S Main St (the parking area in front of Retrograde Coffee and Sunshine Cafe)



**Please be patient. All 3 parklets have been "adopted" by local businesses and will be beautified. This is an ongoing process.**

---

### OPEN BUSINESSES

Be sure to contact them first as this information may change from day to day.

[Sonoma West Times & News](#) list of open businesses





[Sebastopol Chamber of Commerce](#) list of open businesses

[Press Democrat](#) list of open businesses

Designated as an essential business, the Sunday Farmer's Market on the Plaza is currently open and taking safety precautions and practicing social distancing. Check their [website](#) for more information.

The City of Sebastopol has compiled a [list](#) of open essential businesses. If your business supplies essential services, please email [business@CityOfSebastopol.org](mailto:business@CityOfSebastopol.org) with details such as offerings, days/hours and any special services like online ordering, takeout, delivery, curbside pickup, and special hours for seniors, at-risk, or first responders.

When visiting local businesses for essential needs, please wear a facial covering and maintain social distance (at least 6 feet between you and anyone outside your household).

---

## SEBASTOPOL CURB SIDE DELIVERY LOCATIONS

The city currently has three curbside pickup locations for businesses in Downtown Sebastopol.

**Locations:**

150 N. Main Street  
162 N. Main Street  
124 S. Main Street

The city is in the process of providing additional curbside delivery locations in an effort to help our local businesses. If your business will have curbside delivery please call **707-823-6167** or email [business@cityofsebastopol.org](mailto:business@cityofsebastopol.org) with this information as this information will help guide the City to locations that will be set aside.



---

## CITY NEWS

---

### REGULAR CITY BUSINESS CONTINUES

**Administrative Services:**

- Administrative Service staff are available by phone or email for questions. Please email [customerservice@cityofsebastopol.org](mailto:customerservice@cityofsebastopol.org); or call **707-823-7863** and leave a message and someone will respond to you.

**Building Department:**

- The Building Department is open and operating regular office hours - Monday - Thursday 7am to 5:30pm, Closed 12pm to 12:30pm.
- The Building Department is located inside the Fire Station.

**City Manager's Office:**

- City Hall is closed, but staff are available by phone or email for questions. Please email [info@cityofsebastopol.org](mailto:info@cityofsebastopol.org); or call **707-823-1153** and leave a message and someone will respond to you.
- City staff encourage the public to keep up with news and updates by following the City's [Facebook](#) page and checking out Council videos.

**Engineering Department:**

- The Engineering Department is open and operating regular office hours - Monday to Thursday 7am to 5:30pm. The Engineering Department is located in the Public Works office. Please note signage on door with instructions for safe interaction with staff.



### Fire Department:

- The Fire Department is open and continuing to provide fire response and emergency services as usual.
- The Fire Department lobby is open during normal business hours Monday - Thursday 7am to 5:30pm, Closed 12pm to 12:30pm.

### Planning Department:

- The Planning Department is (virtually) open Monday - Thursday 7am to 5:30pm (Closed 12pm to 12:30pm) and continues to accept applications. Staff is available via email or phone (707-823-6167). Planning is accepting new applications; please contact staff for instructions for submittals. Click [here](#) for details.

### Police Department:

- Lobby is open to the public. For non-life-or-safety-threatening situations, we encourage the public to call the 24/7 police non-emergency line at **707-829-4400**. As always, in the event of emergency, call **911**.
- [Sebastopol Police Log November 30 - December 6](#)

### Public Works Department:

- The Public Works Department is open and operating regular office hours - Monday to Thursday 7am to 5:30pm. Please note signage on door with instructions for safe interaction with staff.
- Water and sewer utility systems continue to be monitored and maintained.

---

## CITY MEETINGS

All meetings will be held virtually and are open to the public to attend via web or phone link.

Agendas for upcoming meetings can be found on the City website by clicking the [“Meetings”](#) link on the home page. Agendas will contain information about participating virtually in real time when this feature is available.

### City Council Meetings:

- **Meeting Days:** First and Third Tuesday of each month
- **Meeting Time:** 6pm
- **Livestream Link:** <http://bit.ly/sebcctv>
- To submit comments before the meeting:
  - **For Items Not on the Agenda:** Members of the public may submit written emails/comments for items not on the agenda either by email as a public record or by public comment during the public comment period of the virtual City Council meeting. All written emails/comments will be provided to the entire City Council as a public record but will not be read into the minutes at the City Council meeting. Written emails/comments should be received by 5:00 pm of the Council Meeting Date for submission to the entire City Council prior to the meeting and will be included as a part of the record of the meeting. Please submit your comments via email for this meeting to [mgourley@cityofsebastopol.org](mailto:mgourley@cityofsebastopol.org)
  - **For Items Listed on the Agenda:** Members of the public may submit written emails/comments for items listed on the agenda either by email as a public record or by public comment during the public comment period of the agenda item during the virtual City Council meeting. **Email comments must identify the Agenda Item Number in the subject line of the email.** All written emails/comments will be provided to the entire City Council as a public record but will not be read into the minutes at the City Council meeting. Written emails/comments should be received by 5:00 pm of the Council Meeting Date for submission to the entire City Council prior to the meeting and will be included as a part of the record of the meeting. Please submit your comments via email for this meeting to [mgourley@cityofsebastopol.org](mailto:mgourley@cityofsebastopol.org)
- **Next Meeting:** [City Council Meeting of December 15, 2020 @ 6:00 PM](#)



### Planning Commission Meetings:

- **Meeting Days:** Second and Fourth Tuesday of each month
- **Meeting Time:** 7pm
- **Livestream Link:** <http://bit.ly/sebcctv>
- To submit comments before meeting, send an email to [ksvanstrom@cityofsebastopol.org](mailto:ksvanstrom@cityofsebastopol.org)

- **[Next Meeting: Planning Commission Meeting of December 22, 2020 @ 7:00 PM](#)**

(NOTE: All meetings will be held virtually and are open to the public to attend via web or phone link. Information for meeting attendance can be found here: <https://www.ci.sebastopol.ca.us/Meeting-Event.aspx>)

### Design Review Board Meetings:

- **Meeting Days:** First and Third Wednesday of each month
- **Meeting Time:** 4pm
- **Livestream Link:** <http://bit.ly/sebcctv>
- To submit comments before meeting, send an email to [amontes@cityofsebastopol.org](mailto:amontes@cityofsebastopol.org)

- **Next Meeting: Design Review Board Meeting of December 16, 2020 @ 4:00 PM has been CANCELLED**

### Public Arts Committee Meetings:

- **Meeting Days:** First Wednesday of each month
- **Meeting Time:** 10:30am
- **Livestream Link:** <http://bit.ly/sebcctv>
- To submit comments before meeting, send an email to [amontes@cityofsebastopol.org](mailto:amontes@cityofsebastopol.org)

- **Next Meeting: There are currently no meetings scheduled.**



---

## PLANNING DEPARTMENT NEWS

### Design Review/Tree Board:

#### December 2nd Meeting:

1. 652 Petaluma Avenue (the Petaluma/Palm Professional Medical Bldg) – A Tree Removal application to remove eleven (11) protected redwood trees was approved (due to proximity to structures, etc.).
2. 110 N. Main St. (Portico) - RA request to recess the front façade (glass and door) approximately 11'-6" back to accommodate a covered patio for outdoor dining was approved.

#### December 9th Special Meeting:

1. The 6905 Burnett St. (Livery) design review project to redesign the existing building and add a third level was approved.





**The December 16th Design Review Board meeting is cancelled.**

### **Planning Commission:**

December 8th Meeting:

1. Presentation on Regional Housing Needs Allocation was discussed by the Commission.
2. The Commission also held a general discussion on housing issues in Sebastopol.

### **Façade Improvement Program**

The City has approved four Façade Improvement applications on November 4, 2020. Funk & Flash (200 S. Main St. #110) was allocated funds for a new sign. Bare Raydiance Salon (6910 Weeks Way) was allocated funds for new paint, adding decorative paneling to the façade and signage. HopMonk Tavern (230 Petaluma Ave.) was allocated funds for landscape and exterior lighting improvements. Lastly, The Toyworks (6940 Sebastopol Ave) was allocated funds for new exterior lighting.

**The deadline for review consideration is Tuesday, January 19, 2021.**

If you would like to apply for or discuss the program in more detail, please contact Alan Montes, Associate Planner, at (707) 823-6167, [AMontes@cityofsebastopol.org](mailto:AMontes@cityofsebastopol.org) or take a look at our website: [www.ci.sebastopol.ca.us/Local-Business/Business-Owners/Facade-Improvement](http://www.ci.sebastopol.ca.us/Local-Business/Business-Owners/Facade-Improvement)

---

## **CITY COUNCIL WELCOMES DIANA GARDNER RICH, ELECTS NEW MAYOR AND VICE MAYOR**

At its December 1, 2020 meeting, newly elected Council Member [Diana Gardner Rich](#) was officially sworn in. Rich retired as executive director of the Sebastopol Community Cultural Center in 2017 after having served in that capacity for seven years. Council then elected [Una Glass](#) as mayor and [Sarah Glade Gurney](#) as vice mayor. Glass has been on the Council since June 2014. This is her second term as mayor. Gurney has been on the Council since 2004 and has four times served as mayor. Council Member [Neysa Hinton](#) was also sworn in after her re-election to the City Council. Hinton joined the Council in 2016 and served as mayor in 2018.



---

**SERVICE REMINDERS: TAKE THE LEAVES TO THE CART,**



# NOT TO THE CURB

## SERVICE REMINDERS RECORDATORIOS DE SERVICIO

Do not pile leaves from your property on the street. Use your compost cart. Look for your street sweeping schedule at [Recology.com/Sebastopol](http://Recology.com/Sebastopol). Avoid street parking on sweep day. Make sure trees and shrubs don't grow into the roadway.

No apile hojas de su propiedad en la calle. Utilice su carrito de abono. Busque su horario de barrido de calles en [Recology.com/Sebastopol](http://Recology.com/Sebastopol). Evite el estacionamiento en la calle el día de barrido. Asegúrese de que no crezcan árboles y arbustos en la calzada.

TAKE THE LEAVES TO THE CART



NOT TO THE CURB



## WATER CONSERVATION

Please continue to practice water conservation as much as possible. California is still technically in a drought, with Sonoma County showing "Moderate Drought" conditions. Click [here](#) for more information.

## DON'T FLUSH WIPES!



Flushing wipes, paper towels and similar products down toilets will clog sewers and cause backups and overflows at wastewater treatment facilities, creating an additional public health risk in the midst of the coronavirus pandemic. Please do not flush disinfectant wipes or paper towels down the toilet.

## GENERAL INFO

### SEBASTOPOL CENTER FOR THE ARTS

The Sebastopol Center for the Arts has a fantastic fall education program lined up just for you!!

The classes include Beginning Tap Dancing for Adults and Teens, Drawing Autumn Leaves in Colored Pencil, Nature Journaling, Creative Process in Watercolor, Let's Paint the Wild at the Laguna, Ceramics at Home, and more!

[Adult Classes](#)  
[Youth Classes](#)

Some classes start as soon as next week, so check them out and act fast... For full details visit the Sebastopol Center for the Arts website [here](#).



SONOMA COUNTY LIBRARY

# Digital Collections



More archives • More maps • More images • More data access

*An elegant user experience*  
[digital.sonomalibrary.org](http://digital.sonomalibrary.org)

Interested in local history, culture, art, and archives from the library's special collections? [Sonoma County Digital Collections](#) is easier than ever to use and enjoy. The updated Digital Collections is growing all the time, so bookmark it and discover new ways to keep exploring!

#### Featuring

- Completely redesigned, user-friendly website
- Searchable photographs and maps from Sonoma County history and culture
- [Archival Collection Guides](#)
- Videos, audio, oral histories
- Local authors
- Community memories
- [Guides to historical research](#)
- [International Wine Research Database](#)
- And much more!

Dive into [Sonoma County Digital Collections](#) today!

---

**ADD YOUR VOICE TO THE SONOMA COUNTY LIBRARY  
MEMORY ARCHIVE PROJECT**





# SONOMA RESPONDS

## A Community Memory Archive Un Archivo de Memoria Comunitaria

### Tell Your Story

What comes to mind when you think about the past year? Sonoma County Library invites our communities to collectively build the historical record of living through COVID-19, the Black Lives Matter movement, and the impacts on daily life locally. [Sonoma Responds](#) is an English/Spanish online portal where you can preserve your stories through a variety of media.

### Ways to Share

- Post on social media using #SonomaResponds
- Respond to reflective prompts online
- Upload images, videos, recordings, writings
- Nominate online content for a web archive
- Nominate material for the physical archive

Your submissions will be the primary sources that future generations use to understand the age of social distancing. These stories will live in the library's [Digital Collections](#) and with its online partners such as the Online Archive of California, Calisphere, and the Internet Archive.

---

## EDUCATION RESOURCES

---

### SUPERVISED DISTANCE LEARNING PROGRAM WITH THE SEBASTOPOL CENTER FOR THE ARTS

The Sebastopol Center for the Arts is offering supervised distance learning for families needing daytime help for children Grades 1-5.

The program offers:

- A safe, supervised environment for schoolchildren grades 1-5
- Small groups of 10-12 children who are staying in the same group for 6 weeks
- Supervision of the children by experienced educators who actively support the children during the zoom classes offered by their school



- An ideal environment for children who do not perform well at home due to lack of assistance or supervision
- A place for the children to interact with peers and continue to have a social life during Covid
- Outdoor activities together
- After school program of art classes taught by experienced artists in their field: music, dance, arts and crafts and more

If you know of a family or child that could use this help, write as soon as possible to Dana Swint, Education Manager at [edumanager@sebarts.org](mailto:edumanager@sebarts.org).

First priority goes to Sebastopol Union School District students, but invite anyone interested to contact us. Scholarships and sliding scale fees available.

Click [here](#) for more information. Check out a video on the program [here](#).



**SEBASTOPOL CENTER FOR THE ARTS**

**PRESENTS**  
SUPERVISED DISTANCE LEARNING PROGRAMS  
WELCOMING ALL CHILDREN GRADES 1-5

**PRESENTA**  
PROGRAMAS EDUCATIVOS SUPERVISADOS CON DISTANCIAS SEGURAS  
PARA NIÑOS DE LOS GRADOS 1 – 5

A SAFE supervised space for your child's daily schooling during the pandemic with after school art enrichment. We'll keep your child on track academically and socially, while you're at work.

Ofrecemos un espacio seguro y supervisado para actividades académicas con enriquecimiento artístico después del colegio para que sus hijos se mantengan al tanto socialmente como académicamente mientras Ud. trabaja durante la pandemia.

**SCHOLARSHIPS AVAILABLE**  
Contact Dana Swint at [edumanager@sebarts.org](mailto:edumanager@sebarts.org), (707) 829-4797 x 1009 to learn more. Only 46 spots available.

## BORROW MORE MATERIALS FROM MORE LIBRARIES WITH YOUR LIBRARY CARD



*Borrow more materials from more libraries with your library card*



### Access More Than 9 Million Titles from Other Libraries

Can't find what you're looking for in the library collection? Try [LINK+](#), a free resource sharing service which allows you access to more than nine million titles from over 70 participating libraries in California and Nevada. All you have to do is [search](#) for and select your item, choose Sonoma County from the list of libraries, and select your preferred [curbside pickup](#) location. Books, DVDs, music CDs, audiobooks, and more may be borrowed from participating libraries.

Great precautions are being taken with deliveries outside the system—LINK+ materials are quarantined for seven days before they are moved on to you, just like book drop returns. Up to three LINK+ holds may be placed at a time. Explore a new world of books and media today with [LINK+](#)!



# SCHOOL RESOURCES FROM SONOMA COUNTY LIBRARY

## School Resources

## Recursos Escolares

### Online Library 24/7

### Biblioteca Virtual 24/7



Learn a Language

Aprende un idioma



Learning Express



BookFlix



Streaming Media

Transmisión de películas y más



Study Help

Ayuda con las tareas



StudentOne Card



Lynda.com



OverDrive



Libby



sonomalibrary.org

This is a challenging time for our community, and Sonoma County Library is here to help with your back-to-school needs. Are you a parent of a school-age child or children? A student yourself? Maybe you want to enrich your self-learning. We've put together a list of resources that you may find useful during the school year...and beyond!

- Access educational [eBooks, and eAudiobooks, stream movies and more](#). This includes always-available eBooks and eAudiobooks such as [Diverse Reads for Teens](#) and [Diverse Reads for Kids](#) on OverDrive.
- Students of any age can connect with free tutors and more at [Tutor.com](#).
- Our Student OneCard partnership provides students access to library resources using their student ID number. [See the list of participating schools and learn more about Student OneCards](#).
- Earn your high school diploma online with [Career Online High School](#).
- Learn at home with our [Great Courses collection](#) on OverDrive. Explore 200 expertly-produced audio and video courses by professors such as Neil DeGrasse Tyson!
- Your library card gives you access to [Lynda.com](#), an online learning service that teaches business, technology, and creative skills through video tutorials.
- [LearningExpress Library](#) features nearly 1,000 online tutorials, practice tests, and eBooks for all ages.
- Why not use this time to learn a new language or brush up on one you're already familiar with? [Mango Languages](#) is fun and easy to use.

Still hungry for more? Your online library never closes. [View More eResources](#)

## ONLINE EDUCATION RESOURCES



See the [Sonoma County Office of Education](#) website for news and information about Sonoma County schools.

The [PBS LearningMedia](#) website has several free online resources including standards-aligned videos, interactives, lesson plans, and more. The website also includes [PreK-12 Resources for Emergency Closings](#) that include activities, lesson plans, and videos organized by grade and subject area.



Contact  
Us



7120 Bodega Avenue, Sebastopol, CA 95472

707-823-1153

[www.CityofSebastopol.org](http://www.CityofSebastopol.org)